

## **Brij Madahar**

---

**From:** Robbie Meredith  
**Sent:** 08 September 2020 14:27  
**To:** Mike Day (Councillor); Steve Gallagher (Councillor); David Helliwell (Councillor); Peter Jones (Councillor); Cheryl Philpott (Councillor)  
**Cc:** Mark Thomas (Councillor); Stuart Davies; Mark Thomas; Ben George; David Hughes  
**Subject:** Active Travel 20 / 21 - Sketty Park Links  
**Attachments:** R530\_SKT\_100\_06-09.pdf

Dear Councillors,

### **Active Travel – Sketty Park Links**

With reference to the above, the Highway Improvements Group have secured Welsh Government funding for the design and construction of improved Active Travel facilities within the Sketty Park area.

As part of successful funding, The Welsh Government seeks to enable more people to walk, cycle and generally travel by more active methods, so that:

- more people can experience the health benefits of active travel;
- we reduce our greenhouse gas emissions;
- we help address poverty and disadvantage, and;
- we help our economy to grow by unlocking sustainable economic growth.

The proposed scheme will involve improvements to the southern footway on Sketty Park Drive and the western footway on Park Way. This will provide an improved, accessible connection between Singleton Park and the Sketty Park area, linking to existing facilities on Gower Road.

Please see attached PDF of the General Arrangement for information.

This scheme, as was previously communicated to you, has been designed to facilitate Active Travel in the area, linking to other schemes as part of the Integrated Network Map.

The works will involve widening the existing footway in accordance with Active Travel Design Guidance, along with upgrading existing pedestrian crossings to Toucan crossings and improved signage and lighting.

The scheme will identify requirements for liaison and investment in the local community through the promotion of Active Travel education and infrastructure at nearby schools. Once appointed, The Contractor will be encouraged to support the authorities Green Infrastructure Initiative with additional community tree planting. We will be looking to engage with the schools throughout this project by means of pupil awareness and involvement where possible in an effort to encourage the positive impacts that Active Travel can have on the community.

As part of the scheme evaluation we have had the existing trees inspected by the tree services unit who have identified a number of verge trees (mainly mountain ash) that are either dead, dying or severely suppressed, that they recommend for removal; As a consequence and as part of this scheme we will be replacing those trees and planting an additional 16 new trees at locations where opportunities have been identified. Therefore, the scheme will provide a nett gain in terms of green infrastructure.



Most of the proposed trees are in the verge immediately adjacent the highway and are required to be crown raised above passing vehicles and have a predictable growth shape to avoid future conflict, to provide increased biodiversity, seasonal variation of flowering and autumn colouring and so as not to provide conflict to pedestrians, motorists or highway infrastructure including public Lighting and drainage.

All tree species will be agreed by the Parks team for their future maintenance and management.

The completed scheme will provide safe and legible walking and cycling routes in the area, and in particular routes to and from Parkland Primary School and Olchfa Comprehensive School.

We are proposing to Tender for the scheme in the coming weeks.

Safe and appropriate pedestrian and traffic management will be used throughout the duration of the works, which will last approximately 24 weeks, proposed to start in October 2020.

Temporary pedestrian and traffic management operations may be required during the construction period. Every effort will be made to keep disruption to a minimum. Residents in the area will be notified via a letter drop in the coming weeks, closer to the project start date.

Please do not hesitate to contact me if you have any queries regarding the proposals.

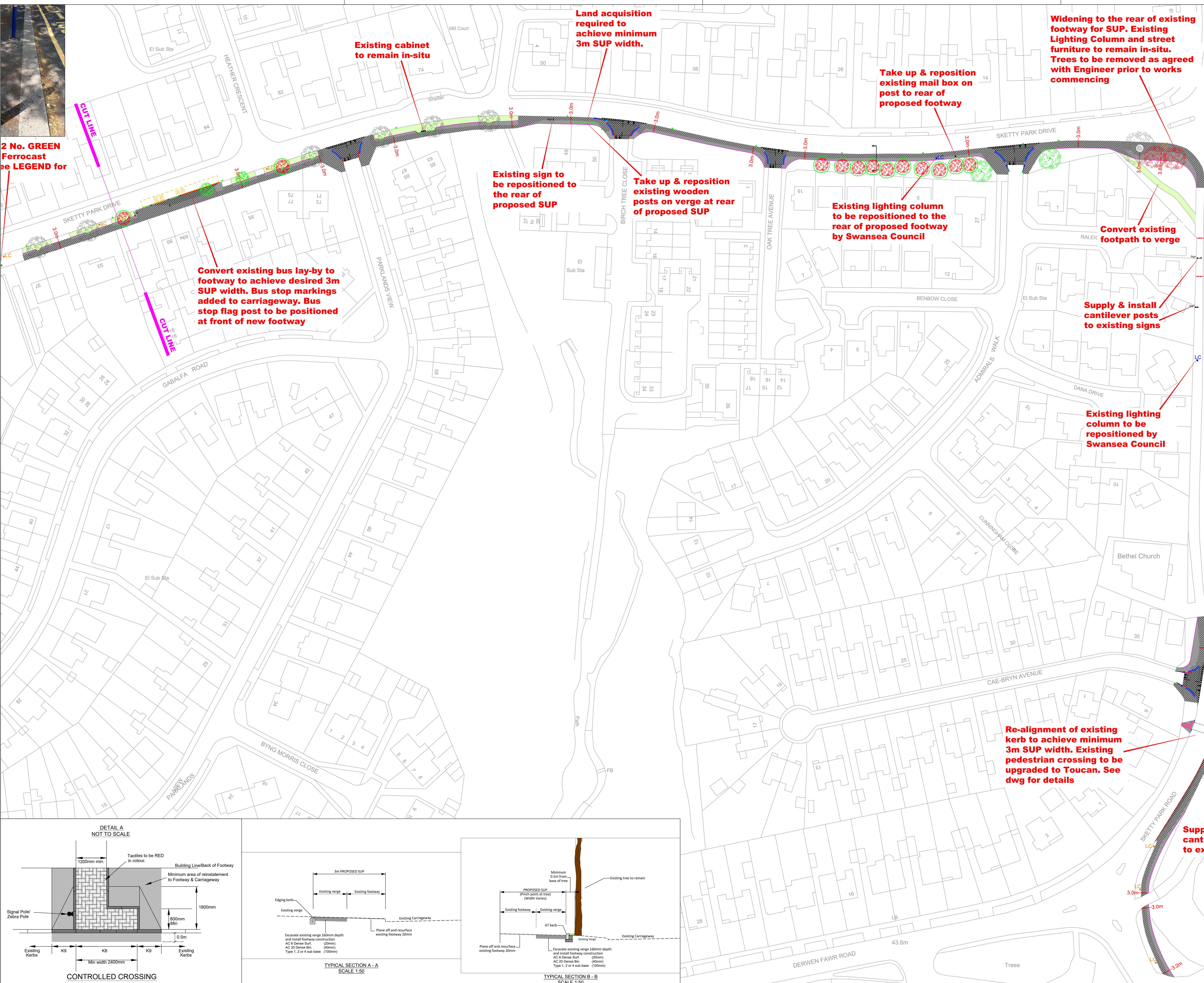
Regards  
Robbie Meredith

**Robbie Meredith**  
Uwch Beiriannydd  
Senior Engineer

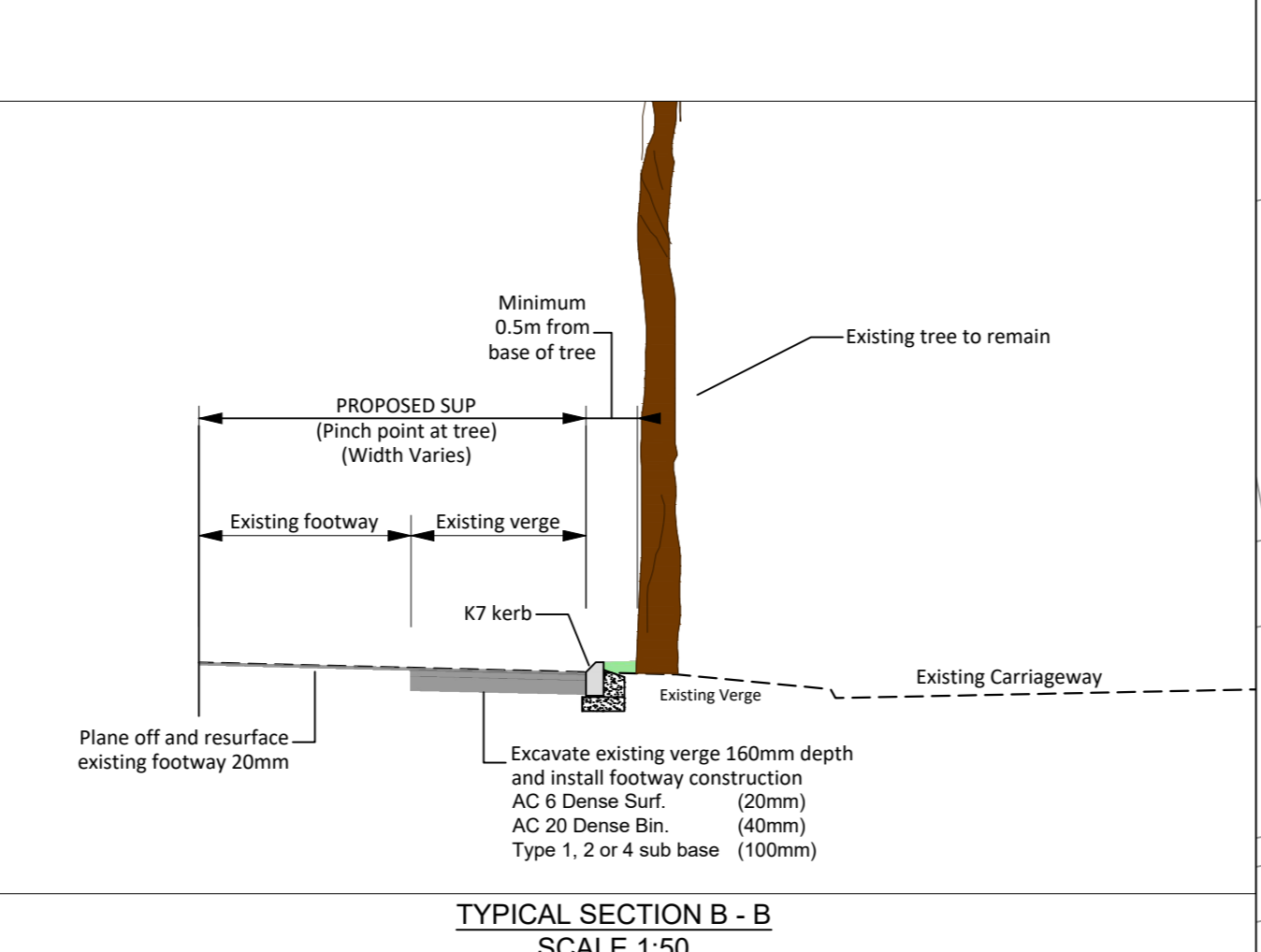
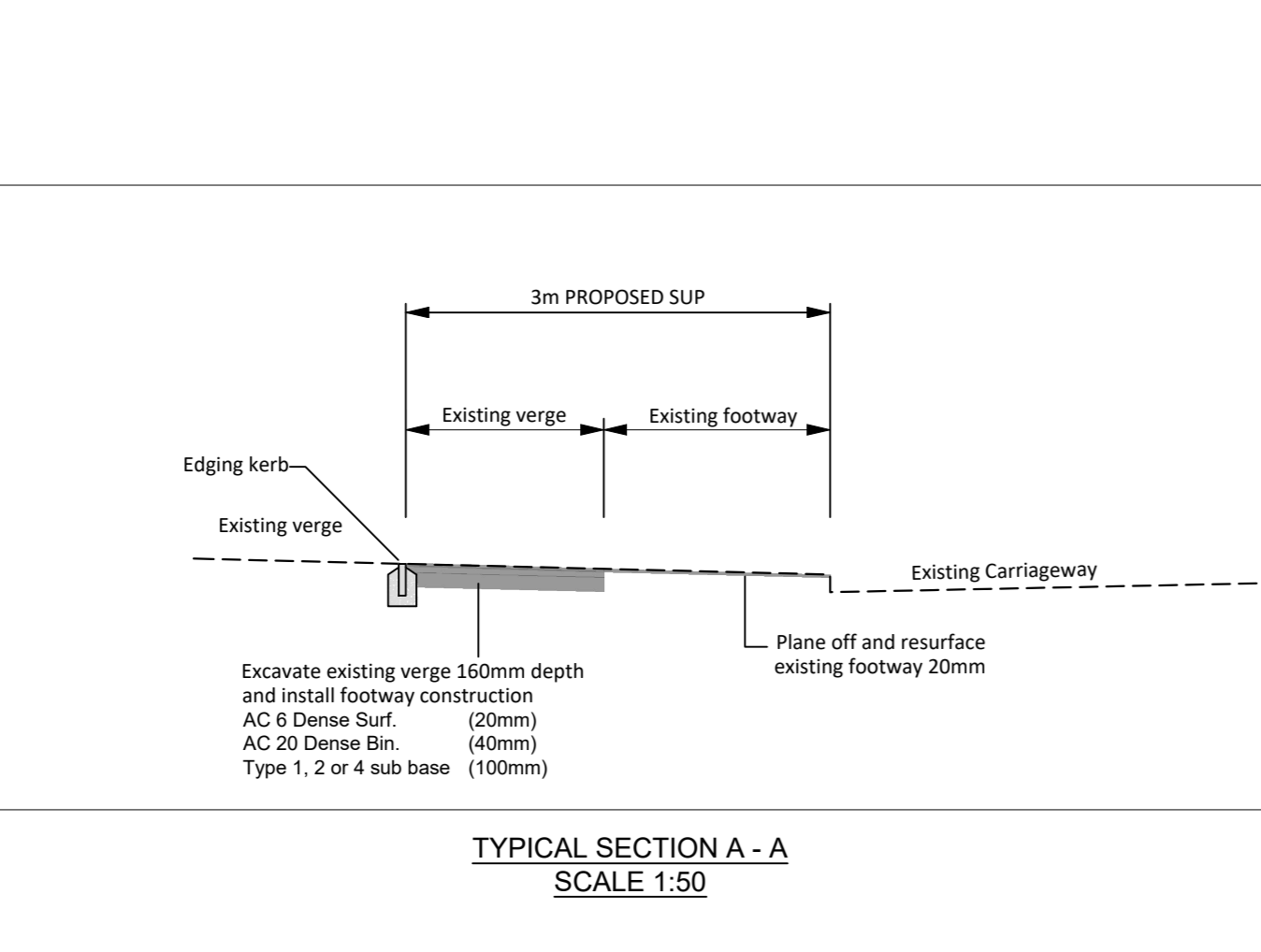
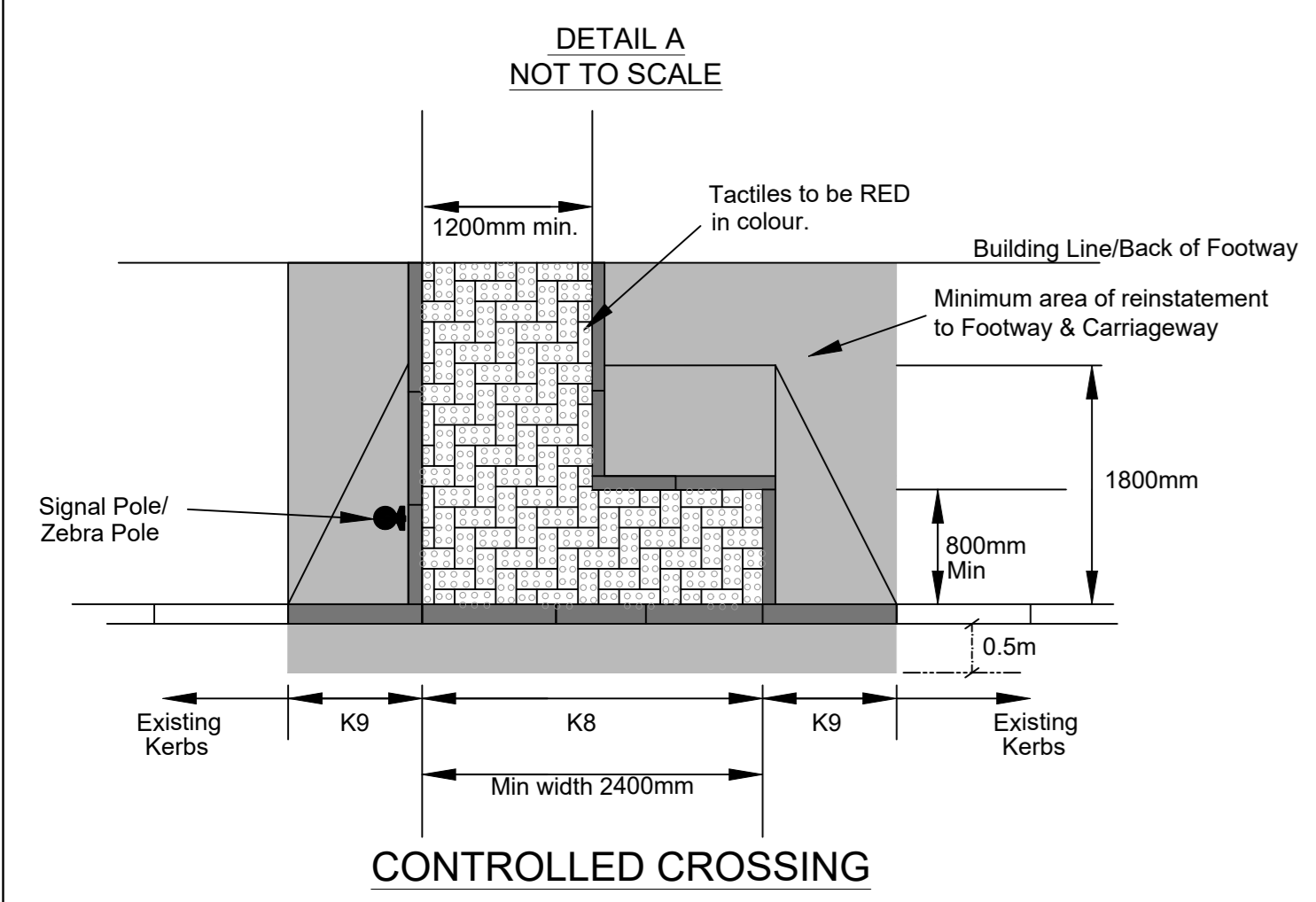
☎ 01792 636229

✉ [robbie.meredith@swansea.gov.uk](mailto:robbie.meredith@swansea.gov.uk)

✉ [robbie.meredith@abertawe.gov.uk](mailto:robbie.meredith@abertawe.gov.uk)



2 No. GREEN Ferrocast see LEGEND for



**NOTES**

- THIS IS A CAD DRAWING AND SHOULD NOT BE AMENDED BY HAND.
- All dimensions in millimeters unless otherwise stated.
- ©Hawflafrt y Goron a hawflau cronfa data 2016 Yr Arlywyddys 100023509. ©Crown Copyright and database rights 2016 Ordnance Survey 100023509.
- Any errors or omissions to be reported to the Designer.

**LEGEND**

Plane existing footway	(20mm)
AC 6 Dense Surf.	(20mm)
Excavate existing AC 6 Dense Surf.	(160mm)
AC 20 Dense Bin.	(20mm)
Type 1, 2 or 4 sub base	(40mm)
	(100mm)
AC Dense Surf. Regulating base course	(20-40mm)
Proposed PCC kerbs, type K1	See detail B or SD_C101
Proposed PCC kerbs, type K8	see detail B or SD_C101
Proposed PCC kerbs, type K9	see detail B or SD_C101
Proposed PCC edging kerbs, type E1	see detail B or SD_C101
Proposed PCC kerbs, 45° splay dropper.	
Proposed BK1 kerbs, see detail B or SD_C121	
Proposed BKT1 kerbs, see detail B or SD_C121	
Proposed PCC kerbs, type K7	See detail SD_C101
Existing gully to remain	Proposed gully connecting drain Group DG1
Proposed Side Entry Kerb Gully	
Existing gully to be raised.	Take up to tip off site gully cover and frame.
Existing gully to be converted to inspection chamber ICZ with class D400 cover & frame.	
Proposed PIPENCIL FERROCAST bollards 1000mm high with 300mm root. Fully pigmented and finished in GREEN to match Parkland Primary School uniform colour.	
3No. Stainless Steel Cycle Stands	
Existing Lighting Column to be taken down by Swansea Council and set aside for reuse.	
Existing Lighting Column to remain in-situ	
Existing trees to be felled, as agreed with Engineer.	
Proposed Trees	
Existing trees to be felled and replaced with new, as agreed with Engineer.	
Existing trees to remain in-situ	
Blister surface clay tactile pavours 200 x 130mm. Red in colour.	(60mm)
Semi dry 6:1 sand / cement mortar bed.	(30mm)
ST3 concrete.	(75mm)
Type 1 sub base.	(50mm)
Edged with E1 PCC kerbs. See detail A	

**Rev** **Date** **Details** **Dr** **Ch** **Ap**

**TENDR TENDER**

**Cyngor Abertawe Swansea Council**

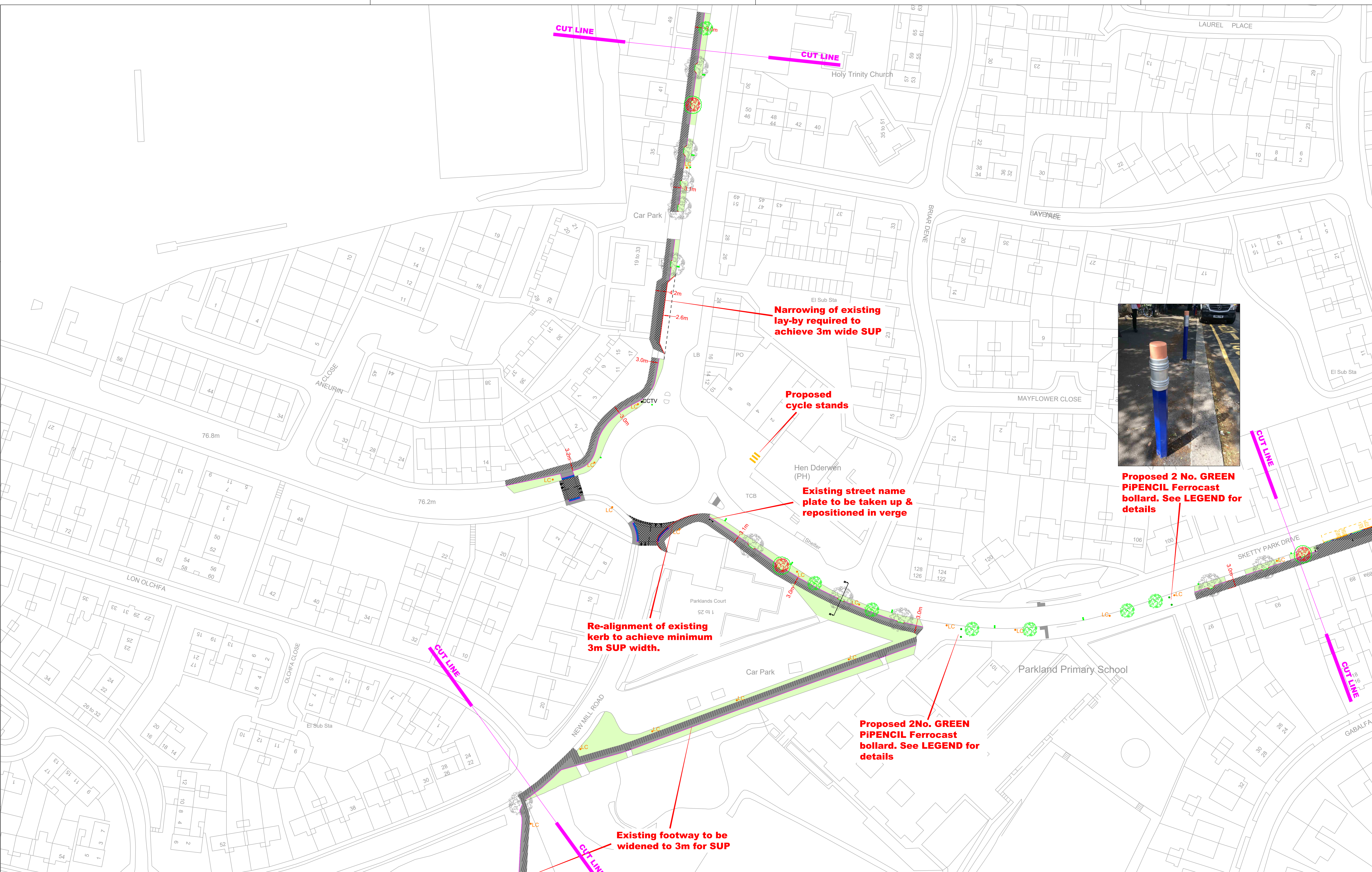
**CYFARWYDAETH LLEDDO**  
DIRECTORATE OF PLACE  
STRATEGIC PLANNING, POLICY, DESIGN, AND  
HEAD OF HIGHWAYS & TRANSPORTATION

**ACTIVE TRAVEL 20 / 21**  
SKETTY

**PROPOSED SHARED USE PATH**  
GENERAL ARRANGEMENT  
SHEET 1 of 4

Drawn by	RPM	Architectural	Checked	Approved	MST
Design Date	08/20	Scale	1:500		A0
Rev'd / Updated					
Drawing No	R530_SKT_100_06				

I:\CapitalRoads\projects\R530\_Active Travel 20/21\_2020\Local Swansea\R530\_SKT\_100\_06.dwg

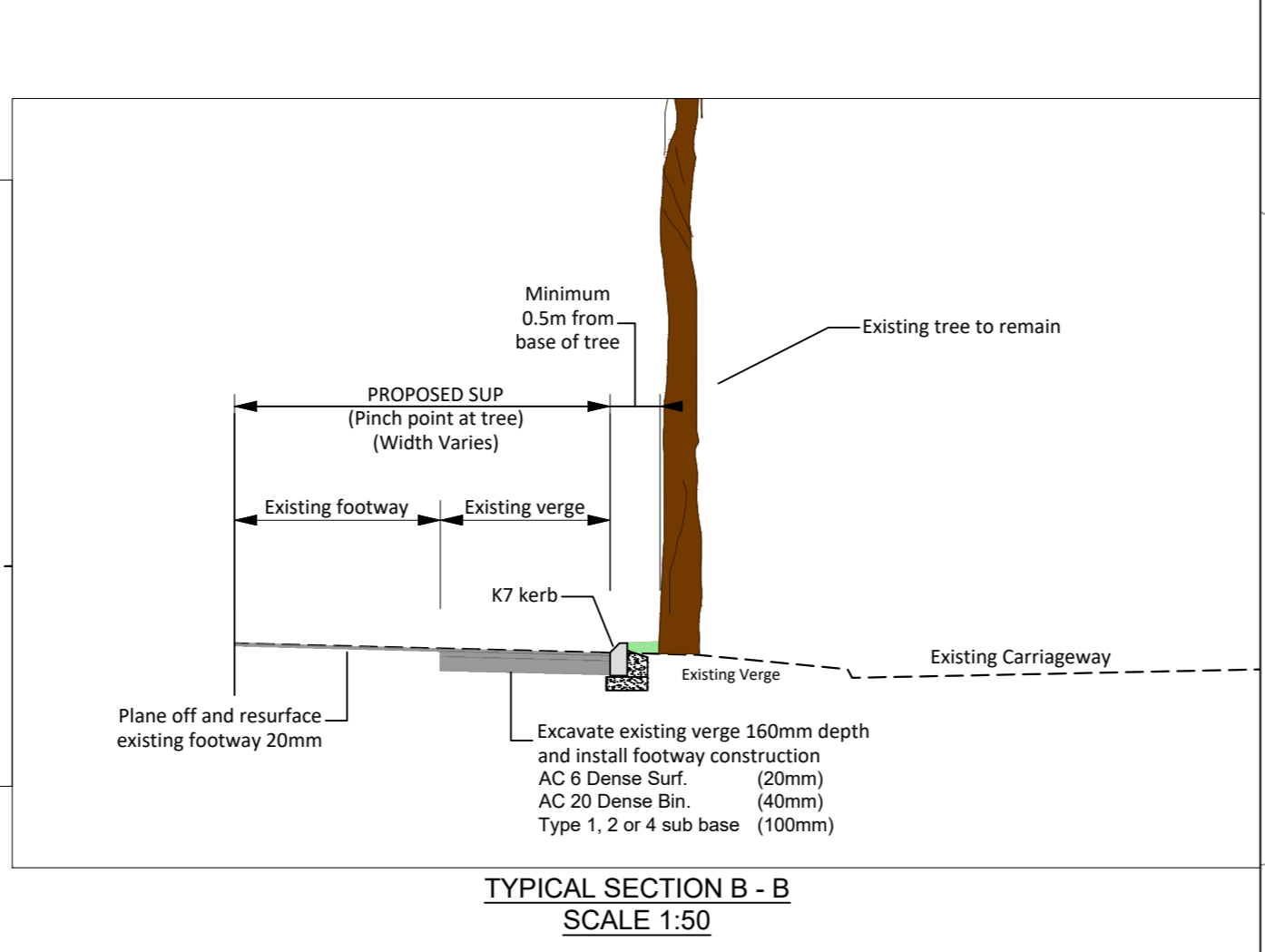
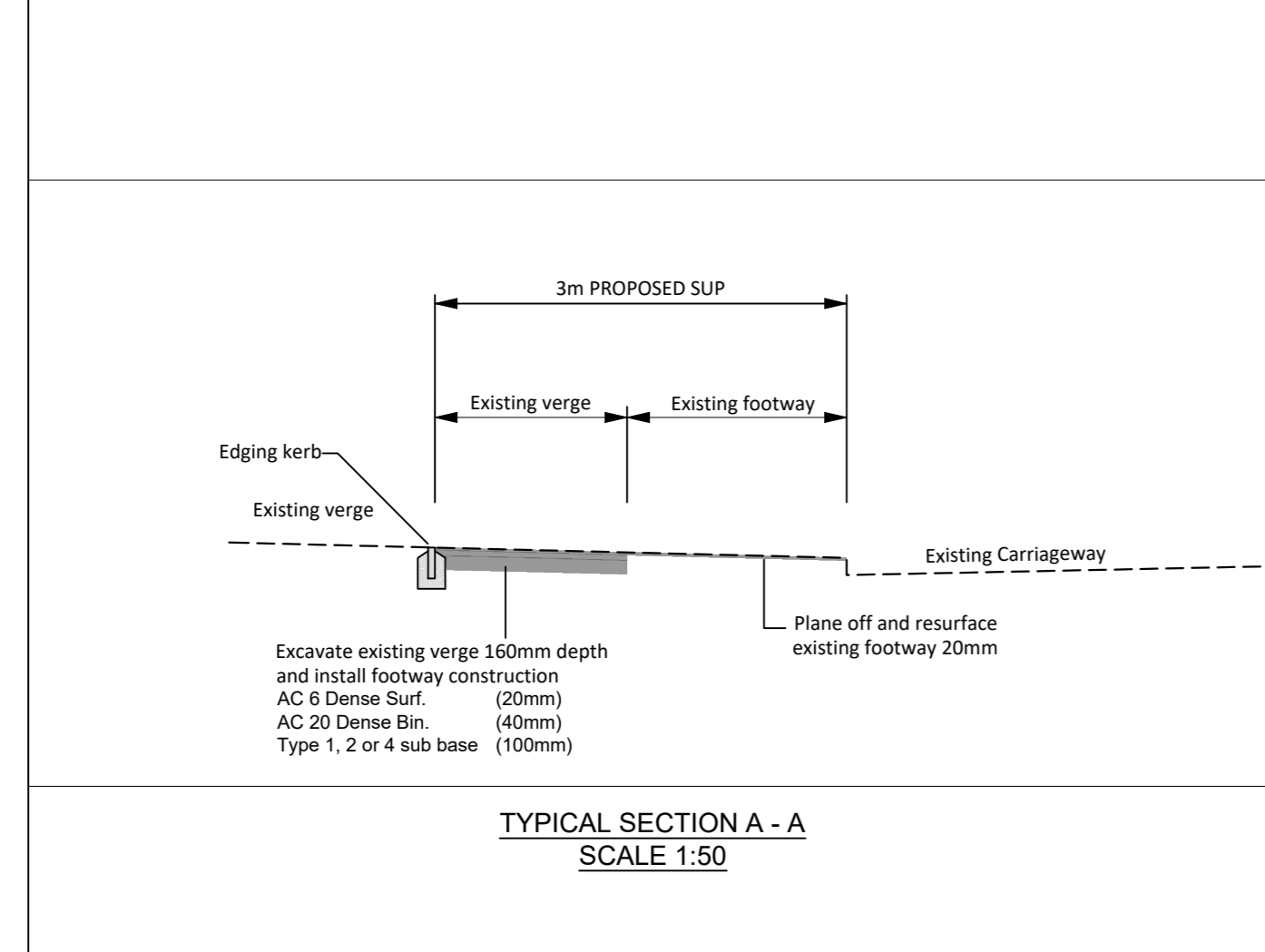
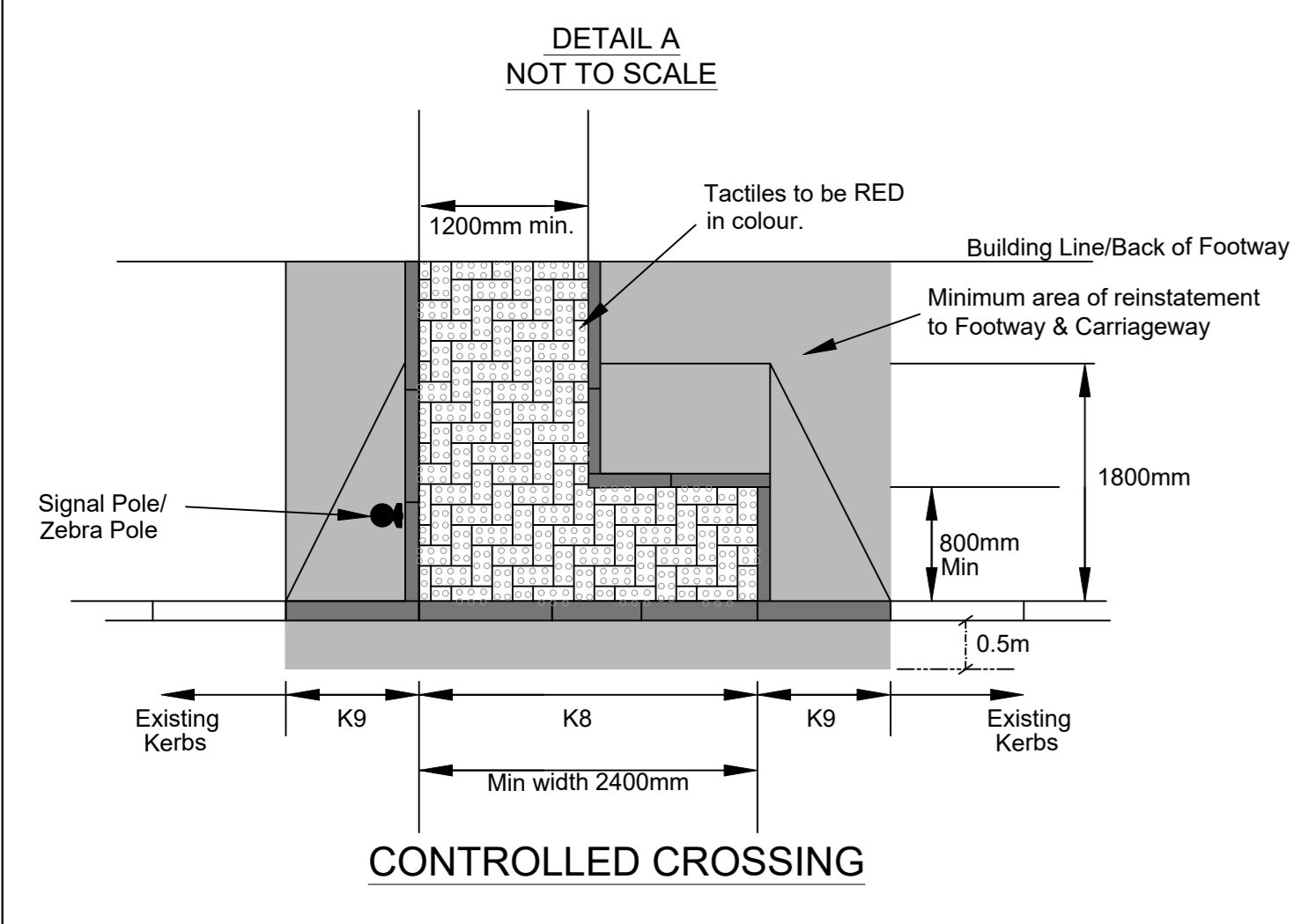


- NOTES**
1. THIS IS A CAD DRAWING AND SHOULD NOT BE AMENDED BY HAND.
  2. All dimensions in millimeters unless otherwise stated.
  3. ©Hawthorn & Co. a hawthorn cronfa ddata 2016 Yr Arolwg Ordnans 100023509. ©Crown Copyright and database rights 2016 Ordnance Survey 100023509.
  4. Any errors or omissions to be reported to the Designer.

- LEGEND**
- Plane existing footway (20mm)
  - AC 6 Dense Surf. (20mm)
  - Excavate existing AC 6 Dense Surf. (160mm)
  - AC 20 Dense Bin. (20mm)
  - Type 1, 2 or 4 sub base (40mm)
  - Type 1, 2 or 4 sub base (100mm)
  - AC Dense Surf. (20-40mm)
  - Regulating base course (100-345mm)
  - Proposed PCC kerbs, type K1 See detail B or SD\_C101
  - Proposed PCC kerbs, type K8 see detail B or SD\_C101
  - Proposed PCC kerbs, type K9 see detail B or SD\_C101
  - Proposed PCC edging kerbs, type E1 see detail B or SD\_C101
  - Proposed PCC kerbs, 45° splay dropper.
  - Proposed BK1 kerbs, see detail B or SD\_C121
  - Proposed BKT1 kerbs, see detail B or SD\_C121
  - Proposed PCC kerbs, type K7 see detail SD\_C101
  - Existing gully to remain Proposed gully connecting drain Group DG1
  - Proposed Side Entry Kerb Gully
  - Existing gully to be raised. Take up to tip off site gully cover and frame.
  - Existing gully to be converted to inspection chamber IC2 with class D400 cover & frame.
  - Proposed PIPENCIL FERROCAST bollards 1000mm high with 300mm root. Fully pigmented and finished in GREEN to match Parkland Primary School uniform colour.
  - 3No. Stainless Steel Cycle Stands
  - Existing Lighting Column to be taken down by Swansea Council and set aside for reuse.
  - Existing Lighting Column to remain in-situ
  - Existing trees to be felled, as agreed with Engineer.
  - Proposed Trees
  - Existing trees to be felled and replaced with new, as agreed with Engineer.
  - Existing trees to remain in-situ
  - Blister surface clay tactile pavours 200 x 130mm. Red in colour. (60mm)
  - Semi dry 6:1 sand / cement mortar bed. (30mm)
  - ST3 concrete. (75mm)
  - Type 1 sub base. (50mm)
  - Edged with E1 PCC kerbs. See detail A



**Proposed 2 No. GREEN PIPENCIL Ferrocast bollard. See LEGEND for details**



Rev | Date | Details | Dr | Ch | App

**TENDR TENDER**

**Cyngor Abertawe Swansea Council**

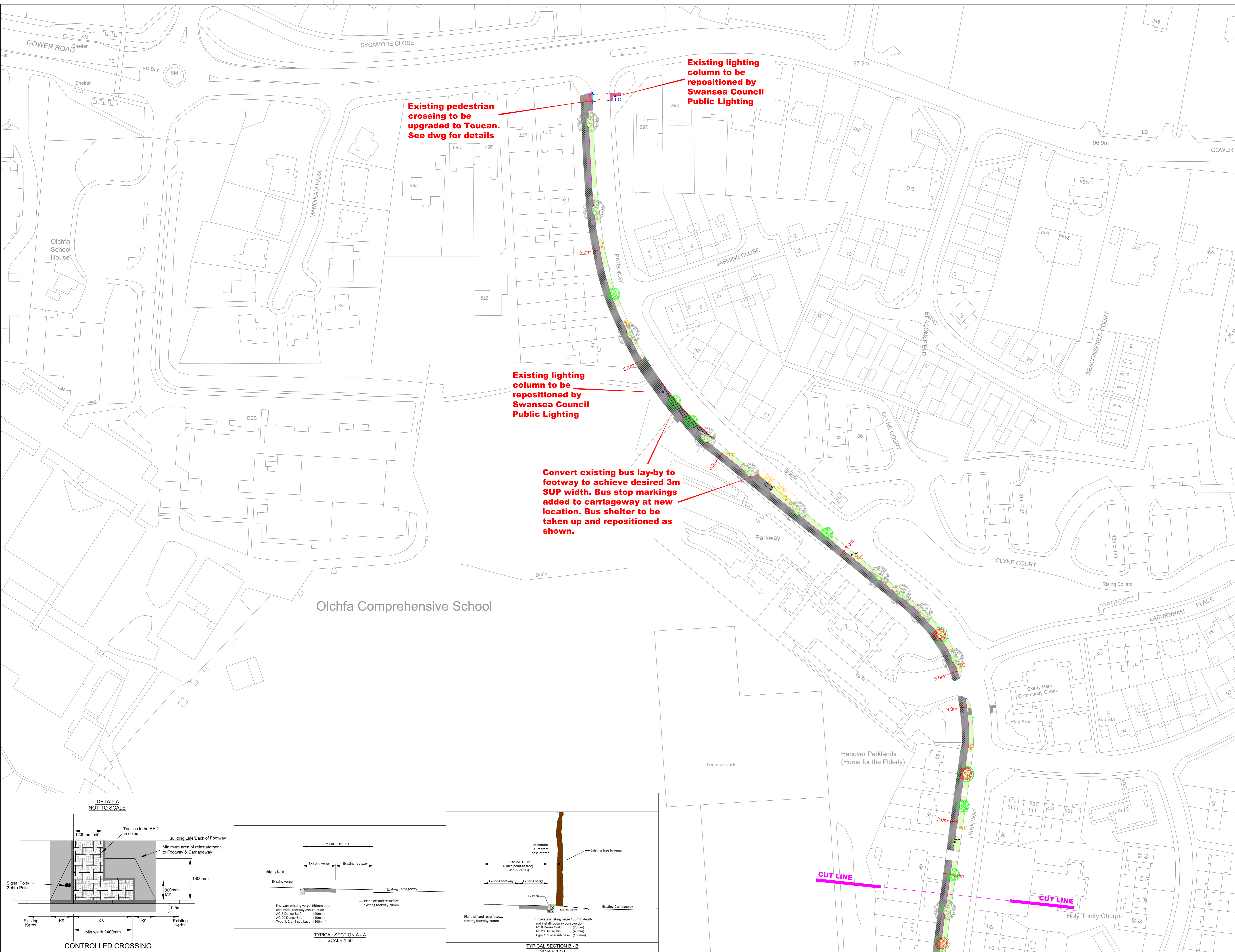
CYFARWYDAETH LLEDEDD  
DIRECTORATE OF PLACE  
STRATEGIC PLANNING, POLICY, DESIGN, AND  
HEAD OF HIGHWAYS & TRANSPORTATION

ACTIVE TRAVEL 20 / 21  
SKETTY

PROPOSED SHARED USE PATH  
GENERAL ARRANGEMENT  
SHEET 2 of 4

Drawn by	SPM	Checked by	DWH	Approved by	MST
Date	08/20	Scale	1:500		A0
Rev / Drawn Drawing No	R530_SKT_100_07				

I:\CapitalRoads\proj\p530\RS30\_L3\_Sketty\Connections\TENDR\DWG\RS30\_SKT\_100\_06.dwg



**NOTES**

- THIS IS A CAD DRAWING AND SHOULD NOT BE AMENDED BY HAND.
- All dimensions in millimeters unless otherwise stated.
- ©Hawfrant y Coron a hawliau cronfa ddata 2016 Yr Arolwg Ordnans 100023509.  
©Crown Copyright and database rights 2016 Ordnance Survey 100023509.
- Any errors or omissions to be reported to the Designer.

**LEGEND**

	Plane existing footway	(20mm)
	AC 6 Dense Surf.	(20mm)
	Excavate existing	(160mm)
	AC 6 Dense Surf.	(20mm)
	AC 20 Dense Bin.	(40mm)
	Type 1, 2 or 4 sub base	(100mm)
	AC Dense Surf. Regulating base course	(20-40mm) (100-345mm)
	Proposed PCC kerbs, type K1	See detail B or SD_C101
	Proposed PCC kerbs, type K8	see detail B or SD_C101
	Proposed PCC kerbs, type K9	see detail B or SD_C101
	Proposed PCC edging kerbs, type E1	see detail B or SD_C101
	Proposed PCC kerbs, 45° splay dropper.	
	Proposed BK1 kerbs, see detail B or SD_C121	
	Proposed BKT1 kerbs, see detail B or SD_C121	
	Proposed PCC kerbs, type K7	See detail SD_C101
	Existing gully to remain	
	Proposed gully connecting drain Group DG1	
	Proposed Side Entry Kerb Gully	
	Existing gully to be raised. Take up to tip off site gully cover and frame.	
	Existing gully to be converted to inspection chamber IC2 with class D400 cover & frame.	
	Proposed PIPENCIL FERROCAST bollards 1000mm high with 300mm root. Fully pigmented and finished in GREEN to match Parkland Primary School uniform colour.	
	3No. Stainless Steel Cycle Stands	
	Existing Lighting Column to be taken down by Swansea Council and set aside for reuse.	
	Existing Lighting Column to remain in-situ	
	Existing trees to be felled, as agreed with Engineer.	
	Proposed Trees	
	Existing trees to be felled and replaced with new, as agreed with Engineer.	
	Existing trees to remain in-situ	
	Blister surface clay tactile pavours 200 x 133mm. Red in colour.	(60mm)
	Semi dry 6:1 sand / cement mortar bed.	(30mm)
	ST3 concrete.	(75mm)
	Type 1 sub base.	(50mm)
	Edged with E1 PCC kerbs. See detail A	

**Rev**   **Date**   **Details**   **Dr**   **Ch**   **Ap**

**TENDR TENDER**

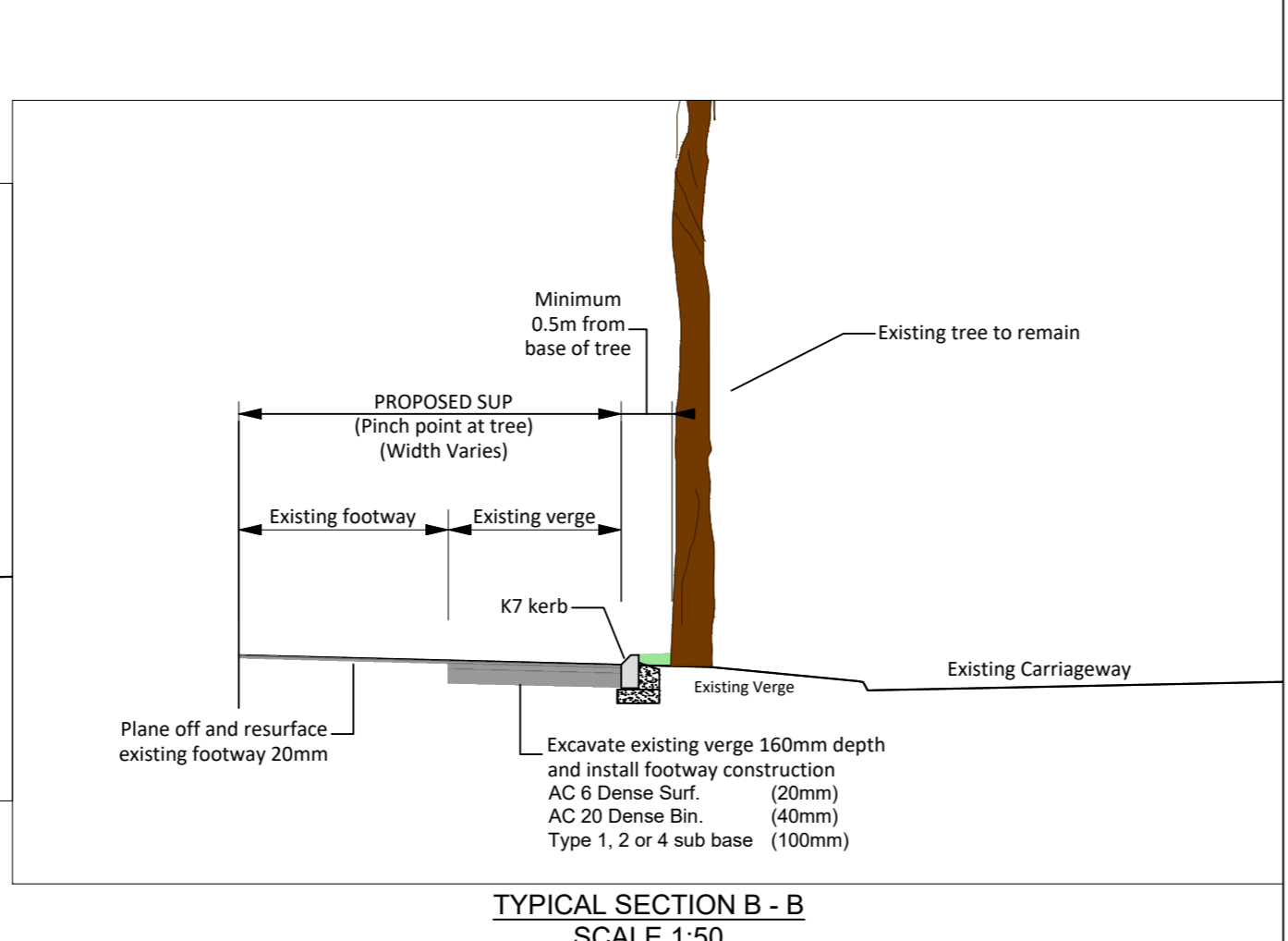
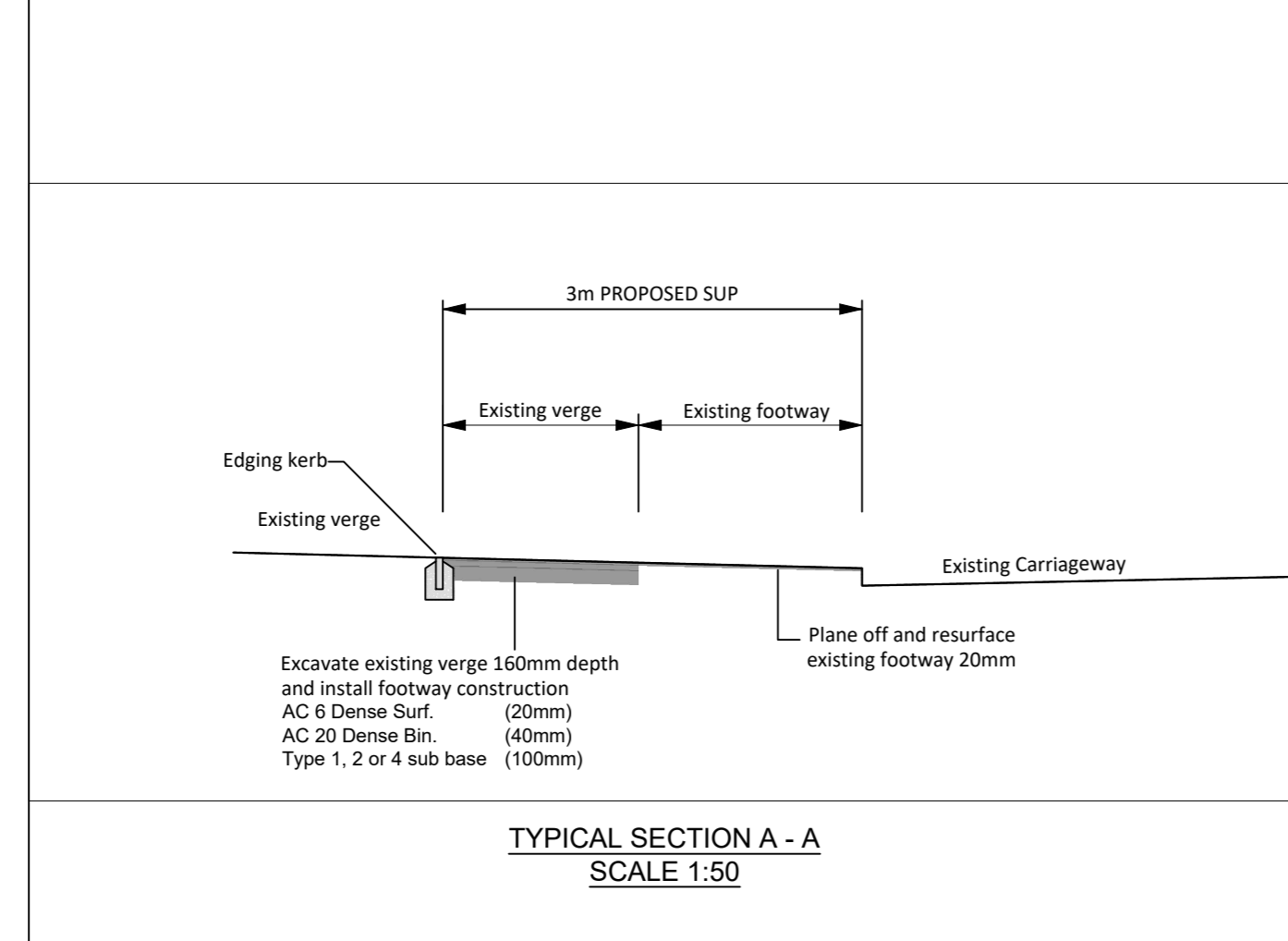
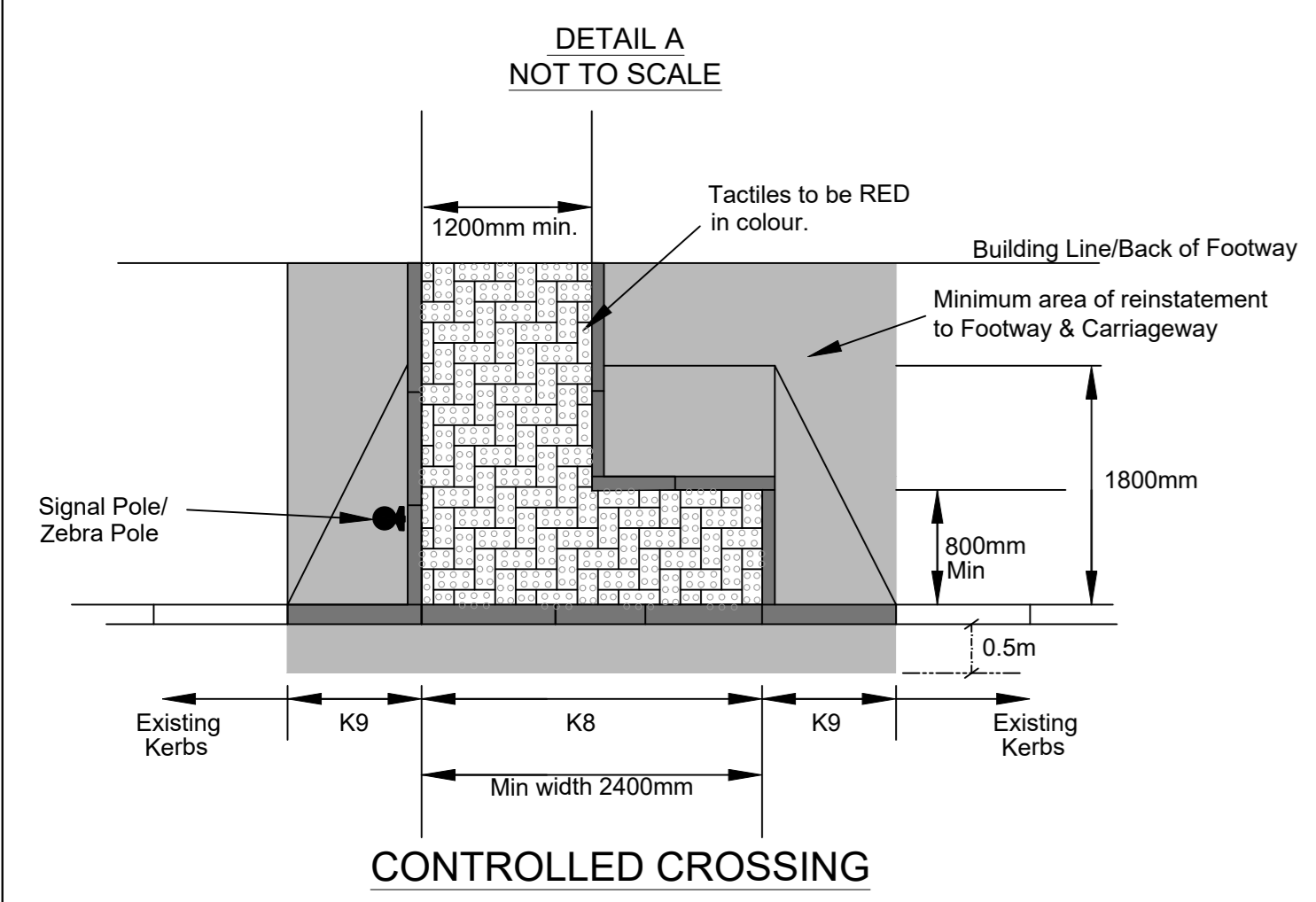
**Cyngor Abertawe Swansea Council**

**CYBARRWYDIAETH LLEDDO**  
DIRECTORATE OF PLACE  
STRATEGIC DESIGN - INFRASTRUCTURE, ACCESS, AREA,  
HEAD OF HIGHWAYS & TRANSPORTATION

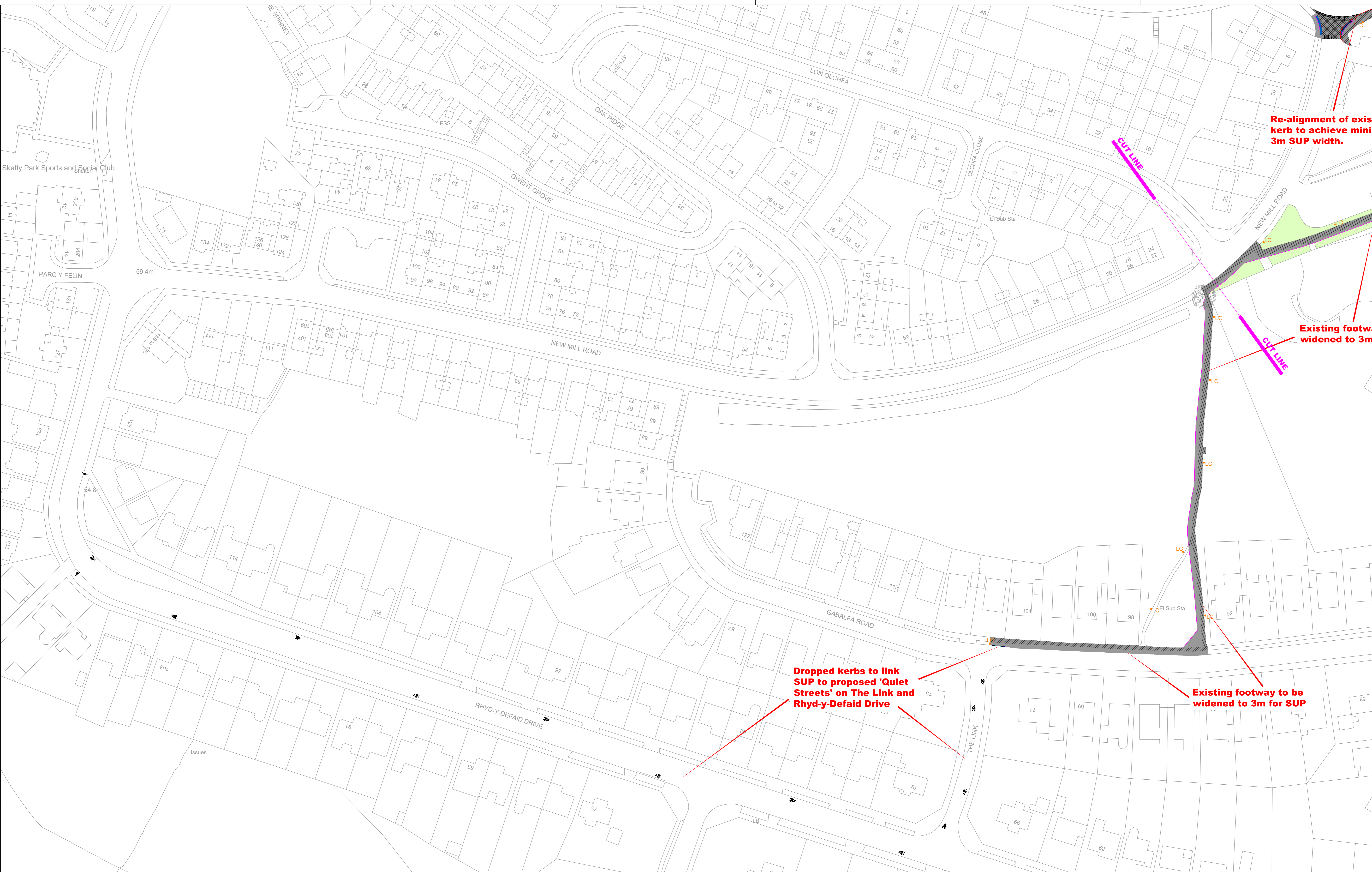
**ACTIVE TRAVEL 20 / 21 SKETTY**

**PROPOSED SHARED USE PATH GENERAL ARRANGEMENT SHEET 3 of 4**

Drawn by	SPM	Checked by	SPM	Approved by	MST
Date	08/20	Scale	1:500		A0
Rev'd / Checked Drawing No	R530_SKT_100_08				



I:\CapitalRoads\proj\p5\R530\_Arwe Travel 2019\_2020\Local Schemes\R530\_L3\_Sketty\Connections\A - TENDR\DWG\R530\_SKT\_100\_08.dwg



**NOTES**

1. THIS IS A CAD DRAWING AND SHOULD NOT BE AMENDED BY HAND.
2. All dimensions in millimeters unless otherwise stated.
3. ©Hawfrant y Coron a hawliau cronfa ddata 2016 Yr Arlywy Ordians 100023509.  
©Crown Copyright and database rights 2016 Ordnance Survey 100023509.
4. Any errors or omissions to be reported to the Designer.

**LEGEND**

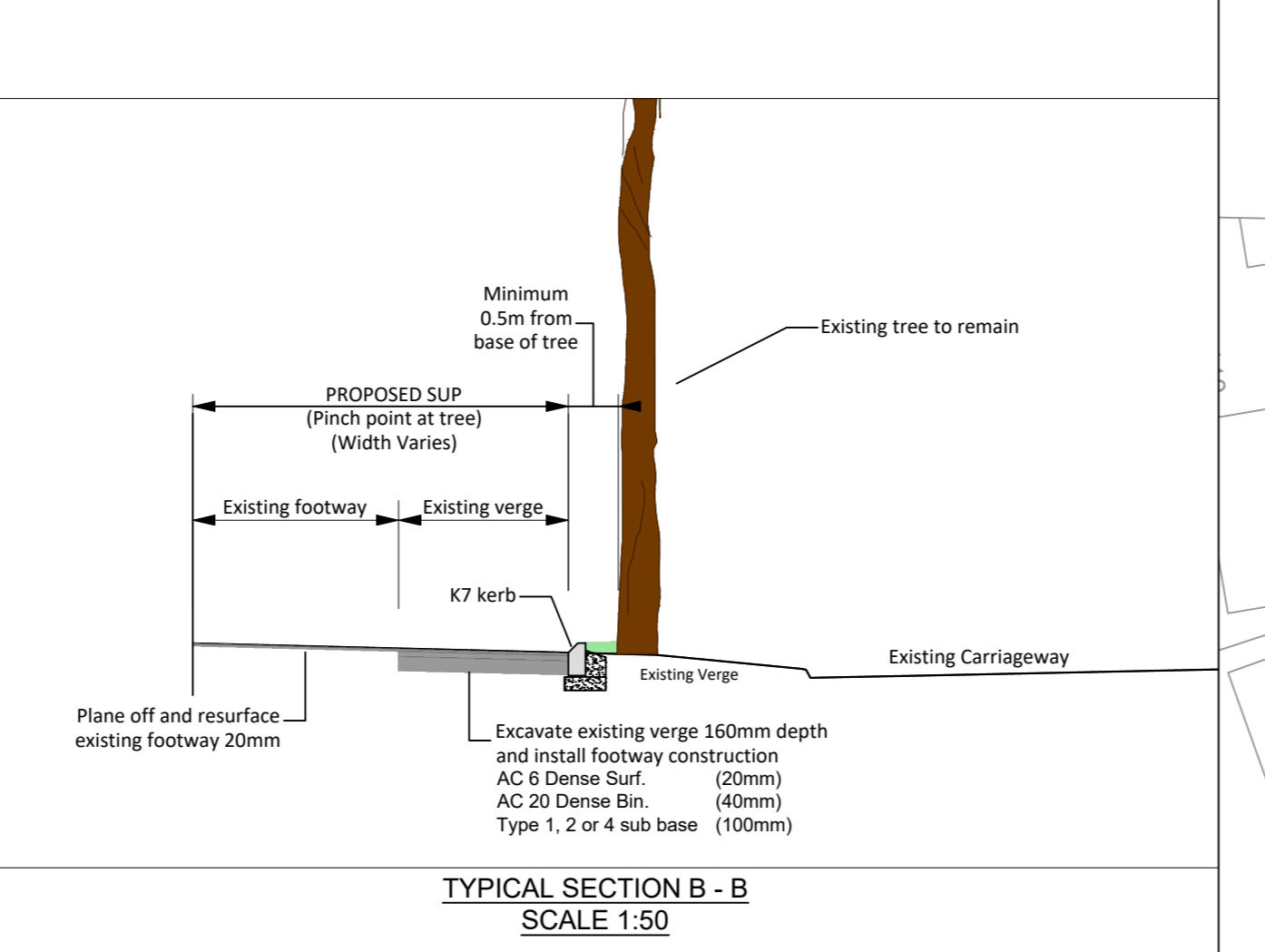
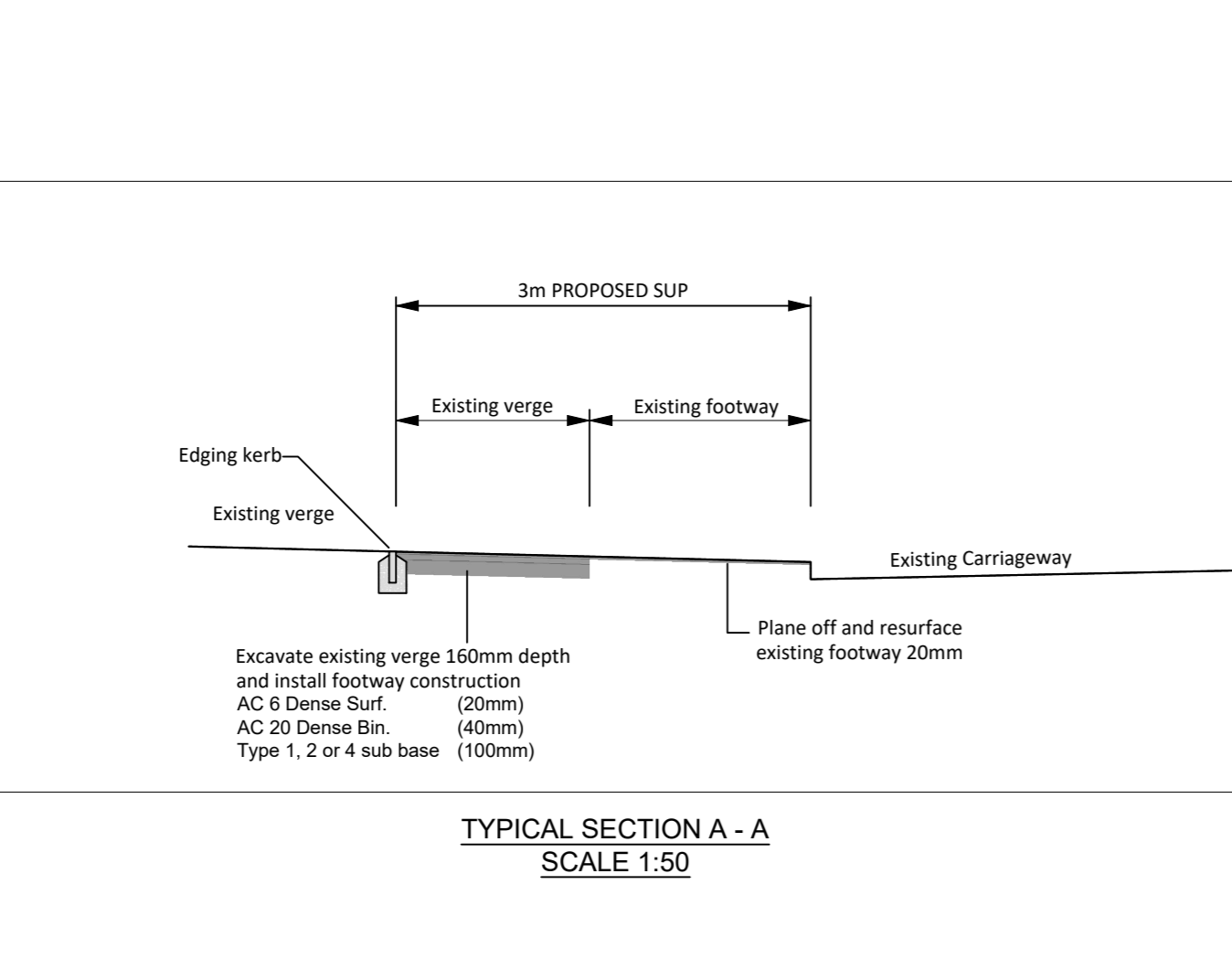
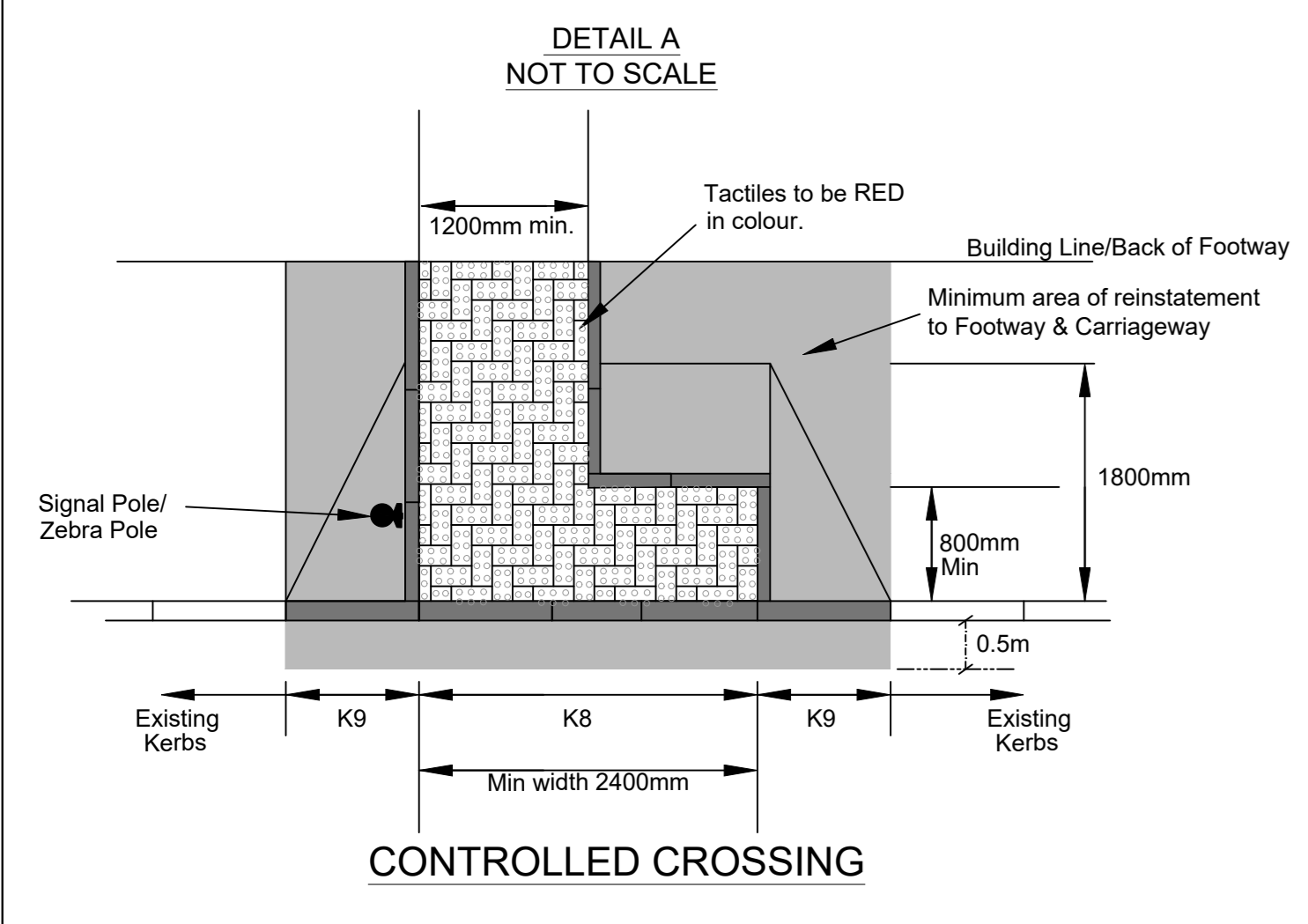
	Plane existing footway	(20mm)
	AC 6 Dense Surf	(20mm)
	Excavate existing	(160mm)
	AC 6 Dense Surf	(20mm)
	AC 20 Dense Bin	(40mm)
	Type 1, 2 or 4 sub base	(100mm)
	AC Dense Surf	(20-40mm)
	Regulating base course	(100-345mm)
	Proposed PCC kerbs, type K1	See detail B or SD_C101
	Proposed PCC kerbs, type K8	see detail B or SD_C101
	Proposed PCC kerbs, type K9	see detail B or SD_C101
	Proposed PCC edging kerbs, type E1	see detail B or SD_C101
	Proposed PCC kerbs, 45° splay dropper	
	Proposed BK1 kerbs, see detail B or SD_C121	
	Proposed BKT1 kerbs, see detail B or SD_C121	
	Proposed PCC kerbs, type K7	See detail SD_C101
	Existing gully to remain	
	Proposed gully connecting drain Group DG1	
	Proposed Side Entry Kerb Gully	
	Existing gully to be raised. Take up to tip off site gully cover and frame.	
	Existing gully to be converted to inspection chamber IC2 with class D400 cover & frame.	
	Proposed PIPENCIL FERROCAST bollards 1000mm high with 300mm root. Fully pigmented and finished in GREEN to match Parkland Primary School uniform colour.	
	3No. Stainless Steel Cycle Stands	
	Existing Lighting Column to be taken down by Swansea Council and set aside for reuse.	
	Existing Lighting Column to remain in-situ	
	Existing trees to be felled, as agreed with Engineer.	
	Proposed Trees	
	Existing trees to be felled and replaced with new, as agreed with Engineer.	
	Existing trees to remain in-situ	
	Blister surface clay tactile pavours 200 x 130mm. Red in colour.	(60mm)
	Semi dry 6:1 sand / cement mortar bed.	(30mm)
	ST3 concrete.	(75mm)
	Type 1 sub base.	(50mm)
	Edged with E1 PCC kerbs. See detail A	

Re-alignment of exist kerb to achieve mini 3m SUP width.

Existing footwa widened to 3m

Dropped kerbs to link SUP to proposed 'Quiet Streets' on The Link and Rhyd-y-Defaid Drive

Existing footway to be widened to 3m for SUP



**TENDR TENDER**

**Cyngor Abertawe Swansea Council**

**CYFARWYDAETH LLEDDO**  
DIRECTORATE OF PLACE  
STRATEGIC PLANNING, POLICY, DESIGN, AND  
LEADERSHIP OF HIGHWAYS & TRANSPORTATION

**ACTIVE TRAVEL 20 / 21 SKETTY**

**PROPOSED SHARED USE PATH GENERAL ARRANGEMENT SHEET 4 of 4**

Drawn by	SPM	DWN	Checked by	MST
Date	08/20	Scale	1:500	A0
Rev'd / Checked Drawing No	R530_SKT_100_09			

Drawing File Location on Network: I:\CapitalRoads\proj\p5\R530\_SKT\Travel 2018\_2020\Local Schemes\R530\_SKT\_100\_09.dwg



The Occupier

Please ask for:  
Gofynnwch am:

Robbie Meredith

Direct Line:  
Llinell Uniongyrchol:

01792 636229

E-Mail:  
E-Bost:

Our Ref:  
Ein Cyf:

Your Ref:  
Eich Cyf:

Date:  
Dyddiad:

05-10-20

Dear Resident

### **RE: Active Travel – Sketty Park Links**

As part of Welsh Government funding Swansea Council has secured monies to carry out the construction of a Shared Use Path along Sketty Park Road, Sketty Park Drive and Park Way. The works are due to commence on site in October 2020.

The scheme proposals consist of upgrading the existing footway, and construction of a new 3m wide shared use path. This will provide an improved, accessible connection between Singleton Park and the Sketty Park area, linking to existing facilities on Gower Road.

In order to construct the works safely for both the general public and the Contractors' workforce, temporary traffic / pedestrian management will have to be installed during the works.

We will try to mitigate disruption to residents as much as possible and apologise for any inconvenience these works may cause.


Please contact myself or any member of the project team on the numbers below if further information is required.

Yours faithfully,

**Mark Thomas**

**Group Leader Traffic & Network Management**

### **DIRECTORATE OF PLACE – HIGHWAYS & TRANSPORTATION CYFARWYDDIATH LLEOEDD – PRIFFYRDD A CHLUDIANT**

 (01792) 841625  [highways@swansea.gov.uk](mailto:highways@swansea.gov.uk)  [priffyrdd@abertawe.gov.uk](mailto:priffyrdd@abertawe.gov.uk)  
Web: [www.swansea.gov.uk](http://www.swansea.gov.uk) Gwefan: [www.abertawe.gov.uk](http://www.abertawe.gov.uk)



We welcome correspondence in Welsh and will deal with Welsh and English correspondence to the same standards timescales.

To receive this information in alternative format, please contact the above.  
I dderbyn yr wybodaeth hon mewn fformat arall, cysylltwch â'r person uchod.

Y Deiliad

Gofynnwch am:  
Please ask for:

Robbie Meredith

Llinell Uniongyrchol:  
Direct Line:

01792 636229

E-Bost:  
E-Mail:

Ein Cyf:  
Our Ref:

Eich Cyf:  
Your Ref:

Dyddiad:  
Date:

05-10-20

Annwyl Breswlydd,

### **PARTHED: Teithio Llesol - Cysylltiadau Parc Sgeti**

Fel rhan o gyllid Llywodraeth Cymru, mae Cyngor Abertawe wedi sicrhau arian i adeiladu llwybr a rennir ar hyd Sketty Park Road, Sketty Park Drive a Park Way. Disgwylir i'r gwaith ddechrau ar y safle ym mis Hydref 2020.

Mae'r cynigion ar gyfer y cynllun yn cynnwys gwella'r llwybr troed presennol ac adeiladu llwybr a rennir 3m o led. Bydd hyn yn darparu cysylltiad gwell a hygyrch rhwng Parc Singleton ac ardal Parc Sgeti, gan gysylltu â'r cyfleusterau sy'n bodoli ar Gower Road.

Er mwyn gwneud y gwaith hwn yn ddiogel, ar gyfer y cyhoedd a gweithlu'r contractwr, bydd yn rhaid rhoi dulliau rheoli traffig/cerddwyr ar waith dros dro yn ystod y gwaith.

Byddwn yn ceisio tarfu cyn lleied â phosib ar breswylwyr ac ymddiheurwn am unrhyw anghyfleustra a achosir gan y gwaith hwn.




Cysylltwch â mi neu unrhyw aelod o dîm y prosiect ar y rhif isod os oes angen rhagor o wybodaeth arnoch.

Yn gywir,

**Mark Thomas**

**Arweinydd Grŵp Rheoli'r Rhwydwaith Traffig a Phrifyrdd**

### **CYFARWYDDIAETH LLEOEDD - PRIFFYRDD A CHLUDIANT DIRECTORATE OF PLACE - HIGHWAYS & TRANSPORTATION**

 (01792) 841625  [priffyrdd@abertawe.gov.uk](mailto:priffyrdd@abertawe.gov.uk)  [highways@swansea.gov.uk](mailto:highways@swansea.gov.uk)  
Gwefan: [www.abertawe.gov.uk](http://www.abertawe.gov.uk); Web: [www.swansea.gov.uk](http://www.swansea.gov.uk)



Croesewir gohebiaeth yn y Gymraeg a byddwn yn ymdrin â gohebiaeth Gymraeg a Saesneg i'r un safonau ac amserler l dderbyn yr wybodaeth hon mewn fformat arall, cysylltwch â'r person uchod.  
To receive this information in an alternative format, please contact the above.



## **Brij Madahar**

---

**From:** Robbie Meredith  
**Sent:** 02 October 2020 14:42  
**To:** Mike Day (Councillor); Steve Gallagher (Councillor); David Helliwell (Councillor); Peter Jones (Councillor); Cheryl Philpott (Councillor); Jeff Jones (Councillor); Linda Tyler-Lloyd (Councillor)  
**Cc:** Mark Thomas (Councillor); Stuart Davies; Mark Thomas; David Hughes; Simon L Jones; Ben George; Chloe Lewis  
**Subject:** Active Travel 20 / 21 - Olchfa Link  
**Attachments:** R530\_OL\_SUP.pdf

Dear Councillors,

### **Active Travel – Olchfa Link**

With reference to the above, the Highway Improvements Group have secured Welsh Government funding for the design and construction of improved Active Travel facilities within the Olchfa / Clyne Woods area.

As part of successful funding, The Welsh Government seeks to enable more people to walk, cycle and generally travel by more active methods, so that:

- more people can experience the health benefits of active travel;
- we reduce our greenhouse gas emissions;
- we help address poverty and disadvantage, and;
- we help our economy to grow by unlocking sustainable economic growth.

The proposed scheme will mainly involve improvements to the existing bridleway tracks from Olchfa Lane, through Clyne Woods, linking to existing NCN Route 4 close to Blackpill. As part of the scheme, we will also be installing a new Toucan Crossing on Gower Road to assist with safe connections to existing infrastructure. This will provide an improved, accessible connection between these areas, linking to existing facilities on Gower Road, and Blackpill.

Please see attached PDF of the General Arrangement for information.

This scheme, as was previously communicated to you, has been designed to facilitate Active Travel in the area, linking to other schemes as part of the Integrated Network Map.

The works will involve widening and improving existing facilities in accordance with Active Travel Design Guidance.

The scheme will identify requirements for liaison and investment in the local community through the promotion of Active Travel education and infrastructure at nearby schools. Once appointed, The Contractor will be encouraged to support the authorities Green Infrastructure Initiative with additional community tree planting. We will be looking to engage with the schools throughout this project by means of pupil awareness and involvement where possible in an effort to encourage the positive impacts that Active Travel can have on the community.

We are proposing to issue the scheme in the coming weeks.

Safe and appropriate pedestrian and traffic management will be used throughout the duration of the works, which will last approximately 24 weeks, proposed to start in October 2020.



Temporary pedestrian and traffic management operations may be required during the construction period. Every effort will be made to keep disruption to a minimum. Residents in the area will be notified via a letter drop in the coming weeks, closer to the project start date.

Please do not hesitate to contact me if you have any queries regarding the proposals.

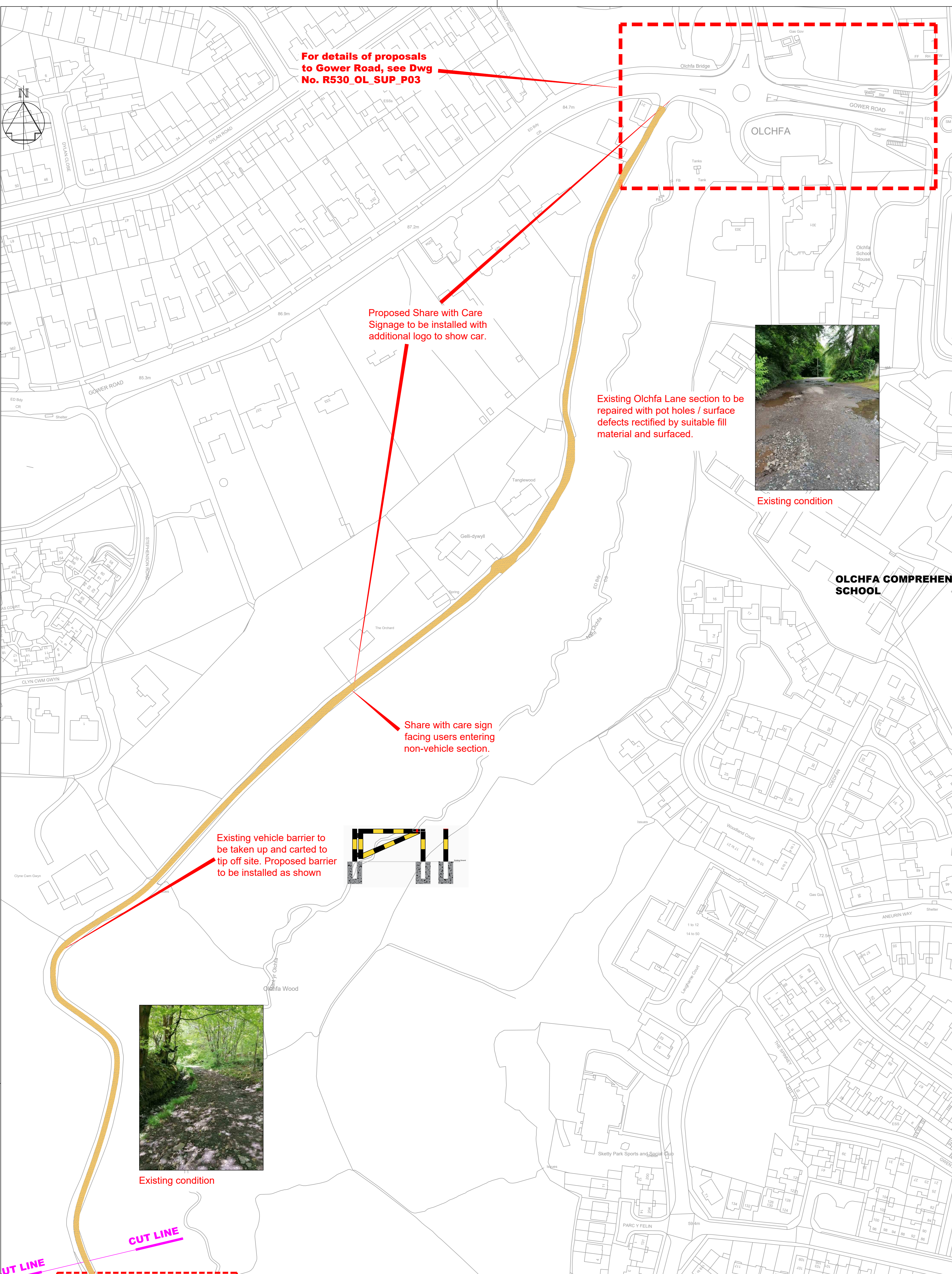
Regards  
Robbie Meredith

**Robbie Meredith**  
Uwch Beiriannydd  
Senior Engineer

☎ 01792 636229

✉ [robbie.meredith@swansea.gov.uk](mailto:robbie.meredith@swansea.gov.uk)

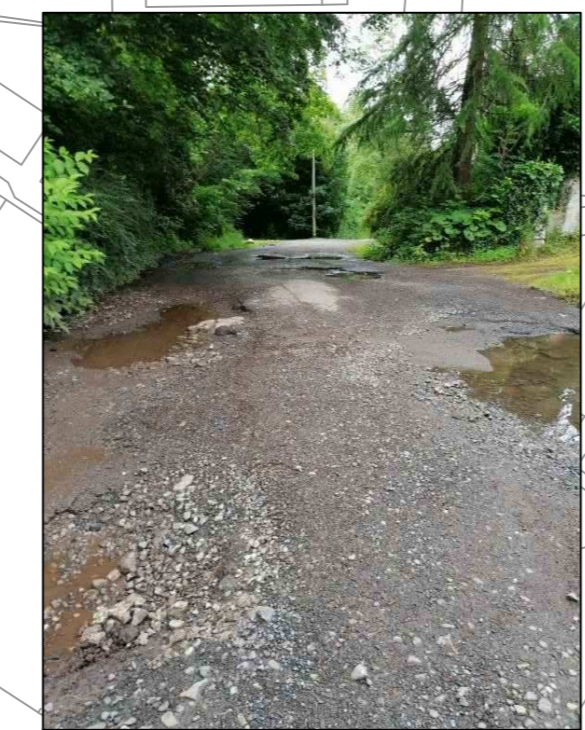
✉ [robbie.meredith@abertawe.gov.uk](mailto:robbie.meredith@abertawe.gov.uk)



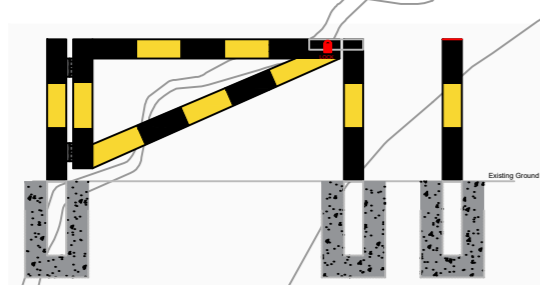
For details of proposals to Gower Road, see Dwg No. R530\_OL\_SUP\_P03

Proposed Share with Care Signage to be installed with additional logo to show car.

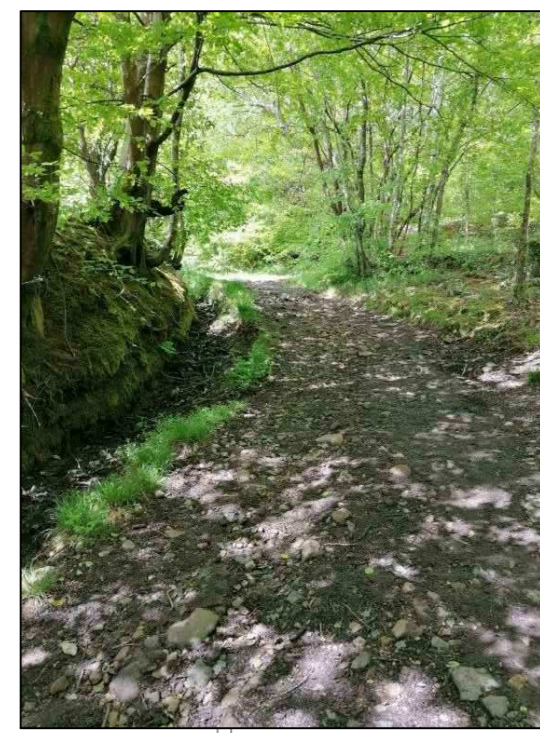
Existing Olchfa Lane section to be repaired with pot holes / surface defects rectified by suitable fill material and surfaced.



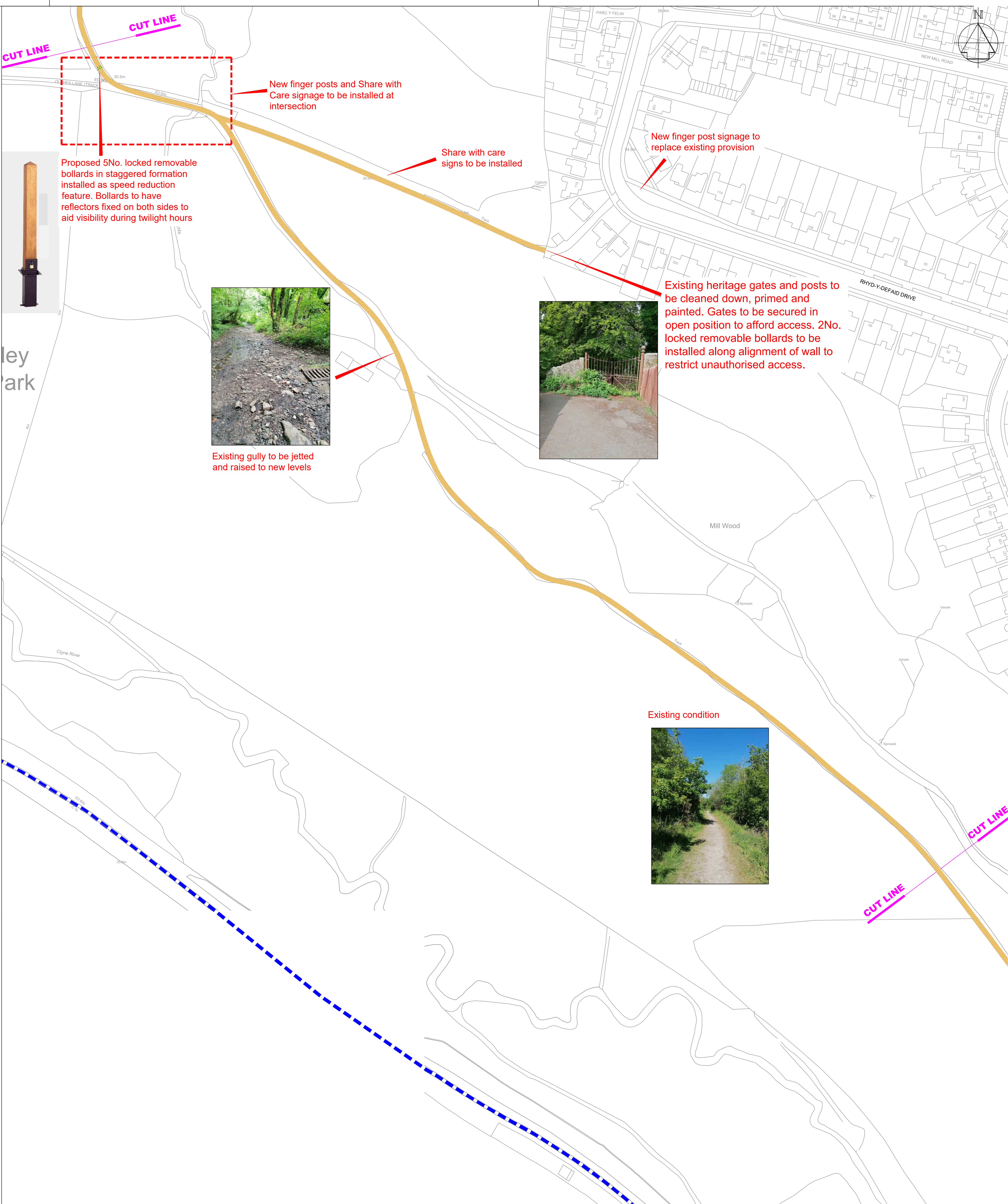
Existing condition



Existing vehicle barrier to be taken up and carted to tip off site. Proposed barrier to be installed as shown



Existing condition



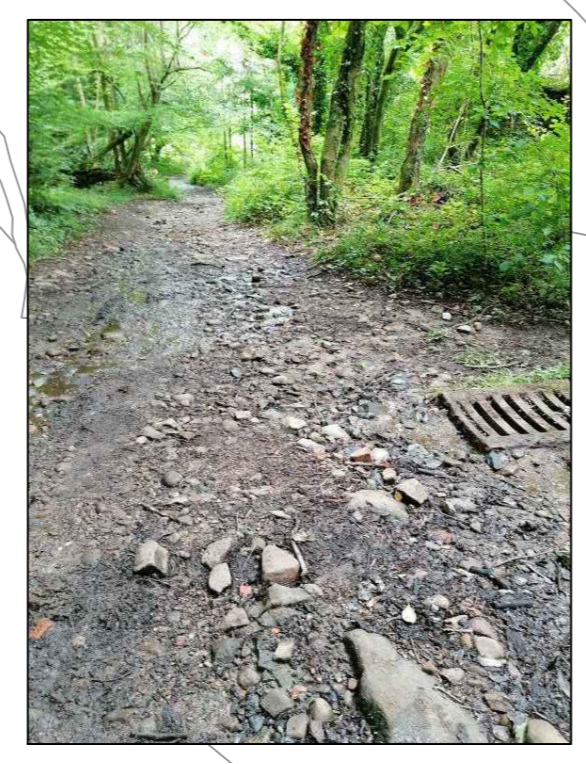
Proposed 5No. locked removable bollards in staggered formation installed as speed reduction feature. Bollards to have reflectors fixed on both sides to aid visibility during twilight hours

New finger posts and Share with Care signage to be installed at intersection

Share with care signs to be installed

New finger post signage to replace existing provision

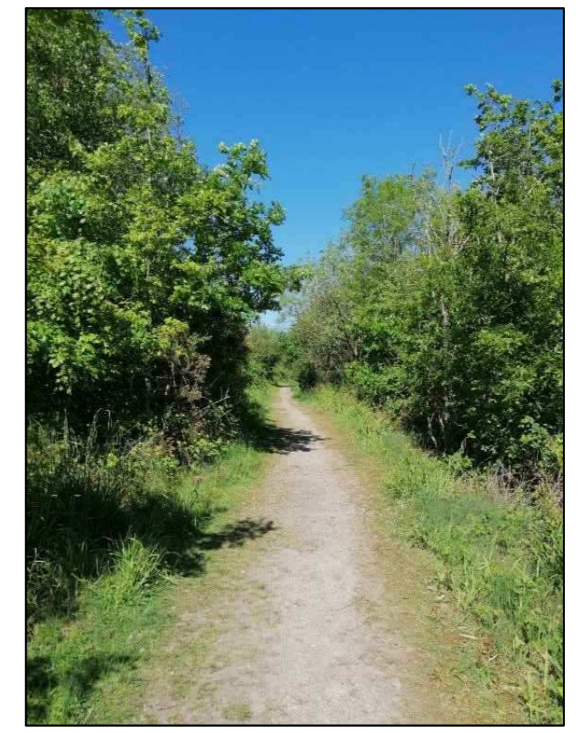
Existing heritage gates and posts to be cleaned down, primed and painted. Gates to be secured in open position to afford access. 2No. locked removable bollards to be installed along alignment of wall to restrict unauthorised access.



Existing gully to be jetted and raised to new levels



Existing condition



NOTES

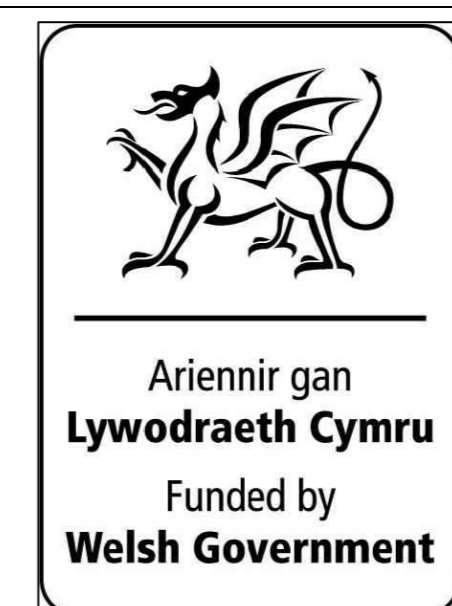
- THIS IS A CAD DRAWING AND SHOULD NOT BE AMENDED BY HAND.
- All dimensions in millimeters unless otherwise stated.
- ©Hoffwainnt y Goron a hawliau cronfa ddala 2016 Yr Arolwg Ordnans 100023509. ©Crown Copyright and database rights 2016 Ordnance Survey 100023509.
- Any errors or omissions to be reported to the Designer.
- No trees are planned to be felled as part of the works, however a full inspection will need to be undertaken by the Council's Tree Services to confirm the structural stability of trees in the immediate vicinity of the route.
- Over hanging branches to be cut back to clear a 2.4m minimum head room.
- Tree roots not to be jeopardised.
- Contractor to clean out and retain all existing drainage ditches.
- Contractor to carry out general site clearance of existing vegetation along proposed route.
- Contractor to select and use suitably sized plant and equipment to prevent damage to trees and branches whilst undertaking works.

LEGEND

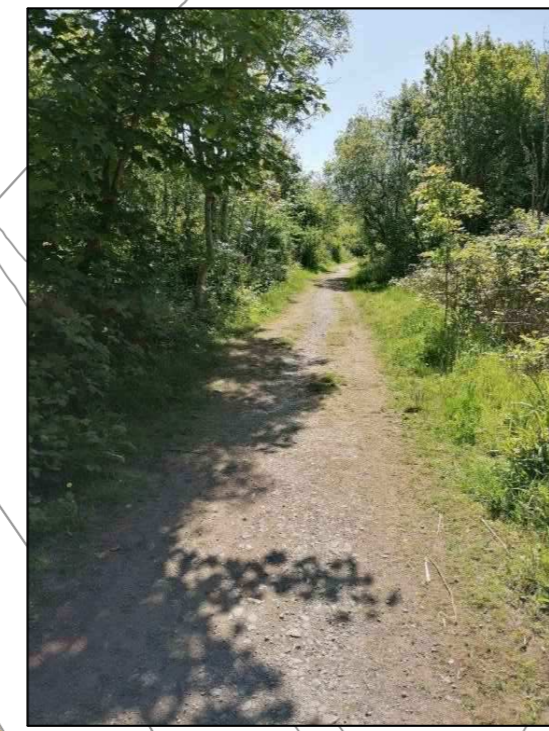
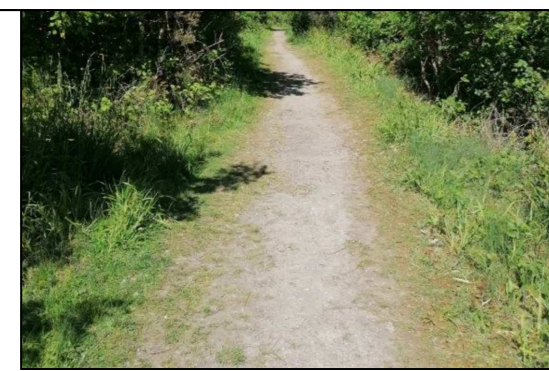
- Proposed 3m minimum width Shared Use Path / Bridleway
- Existing NCN Route 4



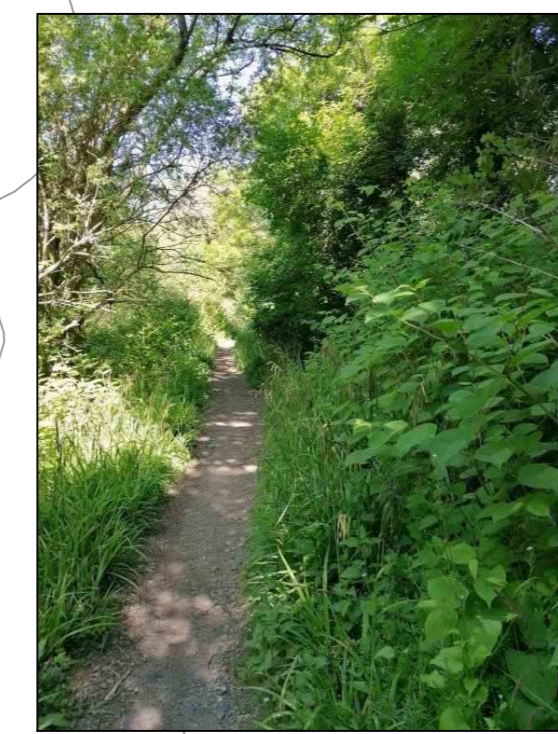
Signage to be installed along route in keeping with surroundings. Locations & frequency to be agreed.



<b>A0</b>		<b>RHAGARWEINIOL - PRELIMINARY</b>	
Dolmwyd Cwm	RPM	Tabl Tie	
Archlysoyd Cwchedd	SLJ	ACTIVE TRAVEL 20 / 21 OLCHFA LINK	
Cymeradwyd Amodd	MST	Cyngor Abertawe Swansea Council	
Dyddiad Ddi	09 / 20	CYFARWYDDIAETH LLEOEDD DIRECTORATE OF PLACE	
Graddfa Scale	1:1000	STUART DAVIES - B.Sc., C.Eng., M.I.C.E., M.B.A. PENARTH PARTNERSHIP A CONSULTANT HEAD OF HIGHWAYS & TRANSPORTATION	
		PROPOSED SHARED USE PATH GENERAL ARRANGEMENT SHEET 1 OF 3	
		Rwyf i Ddiwyd Ddrawing No	
		R530_OL_SUP_P01	



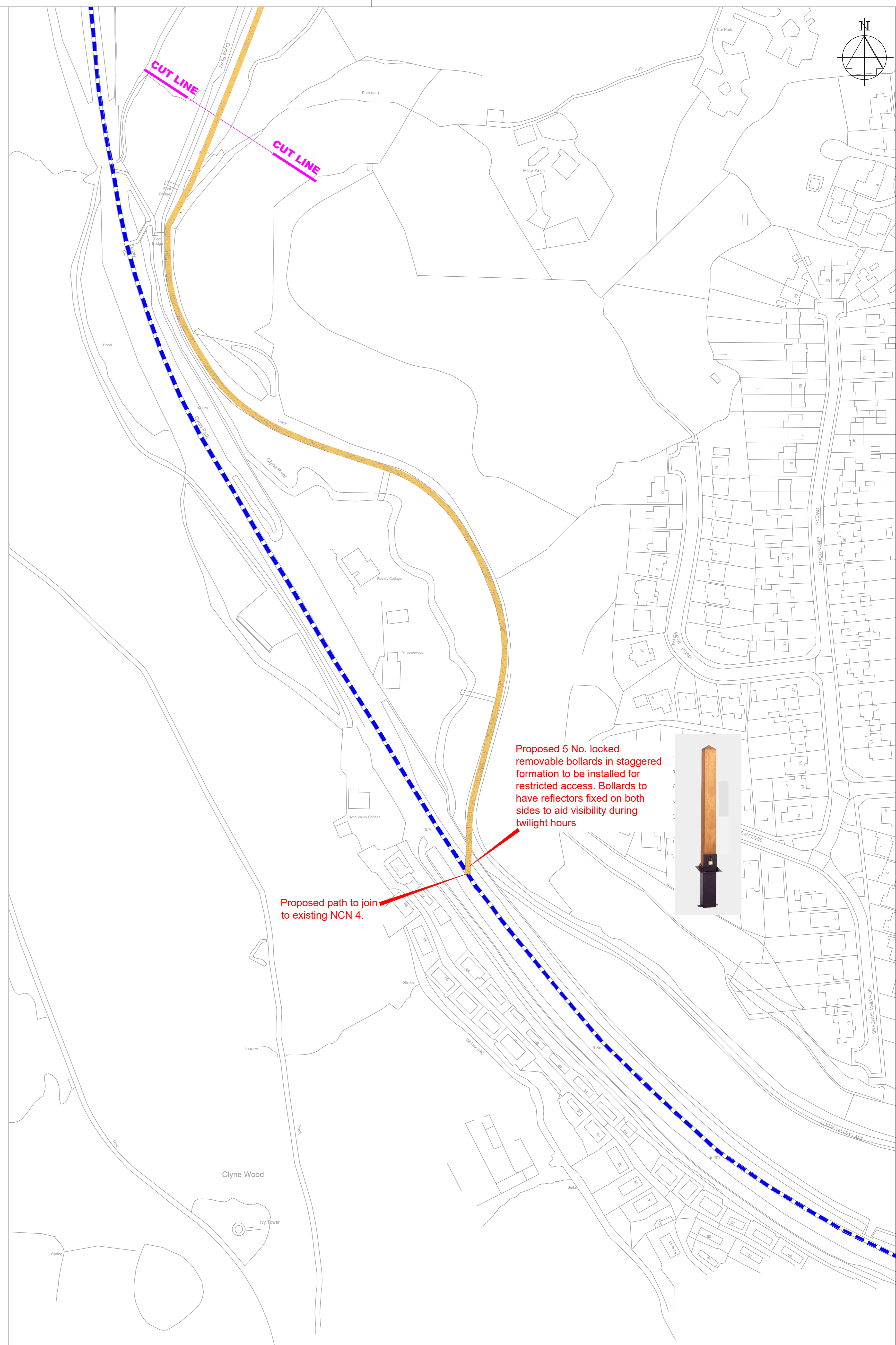
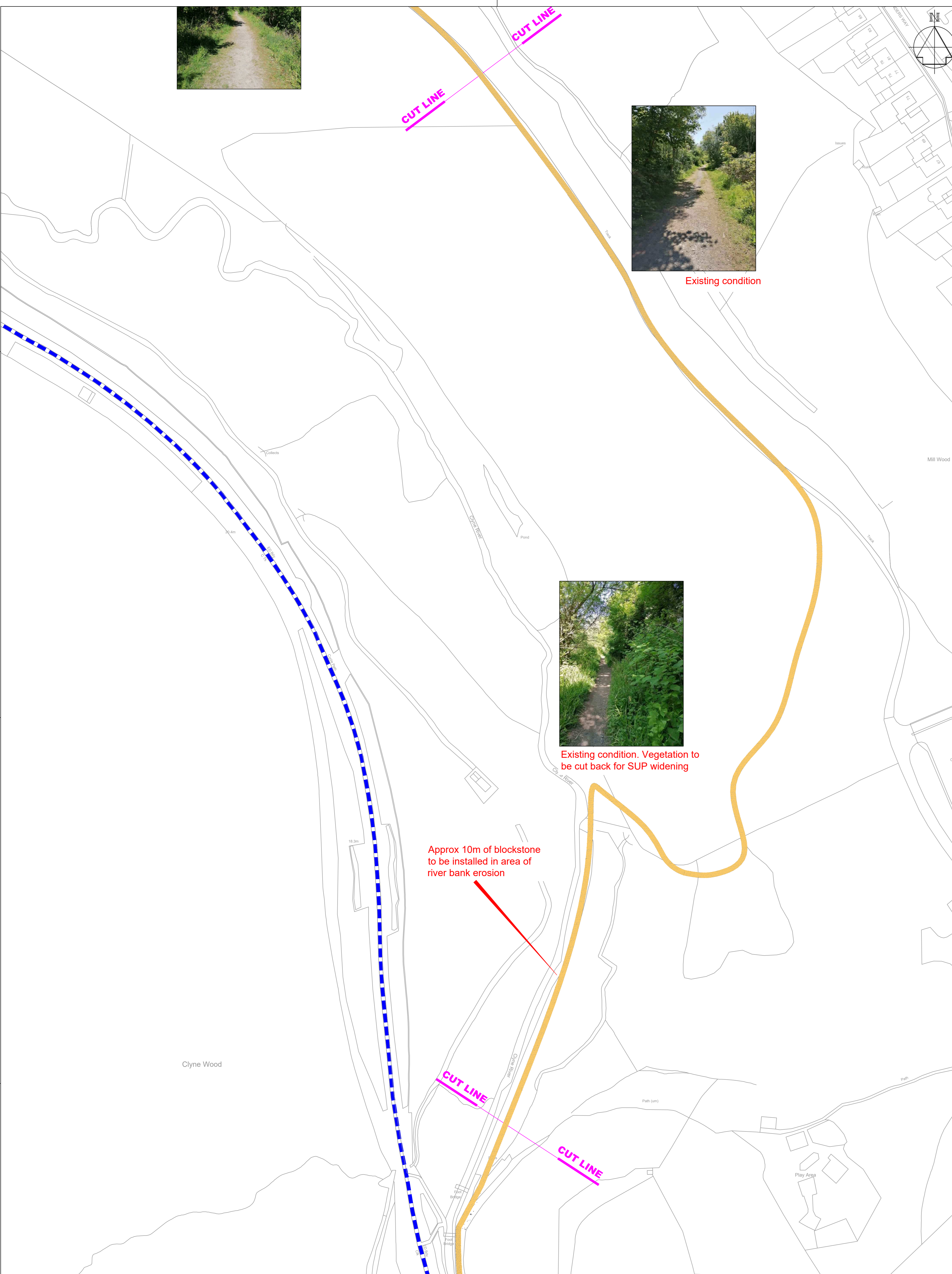
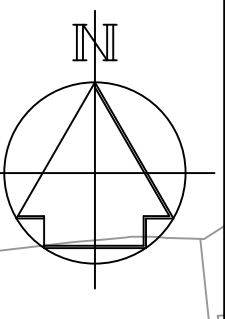
Existing condition



Existing condition. Vegetation to be cut back for SUP widening

Approx 10m of blockstone to be installed in area of river bank erosion

Clyne Wood



Proposed 5 No. locked removable bollards in staggered formation to be installed for restricted access. Bollards to have reflectors fixed on both sides to aid visibility during twilight hours



Proposed path to join to existing NCN 4.

NOTES

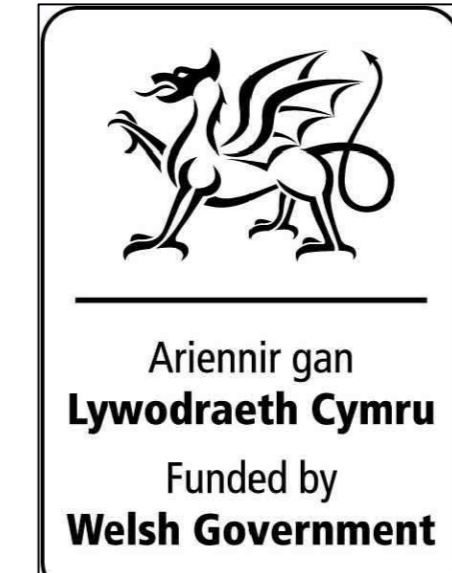
1. THIS IS A CAD DRAWING AND SHOULD NOT BE AMENDED BY HAND.
2. All dimensions in millimeters unless otherwise stated.
3. SHowffaint y Goron a hawliau cronfa ddata 2016 Yr Arolwg Ordnans 100023509. ©Crown Copyright and database rights 2016 Ordnance Survey 100023509.
4. Any errors or omissions to be reported to the Designer.
5. No trees are planned to be felled as part of the works, however a full inspection will need to be undertaken by the Council's Tree Services to confirm the structural stability of trees in the immediate vicinity of the route.
6. Over hanging branches to be cut back to clear a 2.4m minimum head room.
7. Tree roots not to be jeopardised.
8. Contractor to clean out and retain all existing drainage ditches.
9. Contractor to carry out general site clearance of existing vegetation along proposed route.
10. Contractor to select and use suitably sized plant and equipment to prevent damage to trees and branches whilst undertaking works.

LEGEND

- Proposed 3m minimum width Shared Use Path / Bridleway
- Existing NCN Route 4



Signage to be installed along route in keeping with surroundings. Locations & frequency to be agreed.



<b>A0</b>		<b>RHAGARWEINIOL - PRELIMINARY</b>	
Delunwyd Drawn	RPM	Sole Title	
Archwilydd Checked	SLJ	ACTIVE TRAVEL 20 / 21 OLCHFA LINK	
Cymeradwyrdd Approved	MST		
Dyddiad Date	09 / 20	CYFARWYDDIAETH LLEOEDD DIRECTORATE OF PLACE	
Graddfa Scale	1:1000	STUART OWEN B.Sc., C.Eng., M.C.E., M.B.A. PENARTH PROFFWRD A CHAULIANT HEAD OF HIGHWAYS & TRANSPORTATION	
		Rhif y Delunwyd Drawing No <b>R530_OL_SUP_P02</b>	
		CYNGOR ABERTAWE SWANSEA COUNCIL PROPOSED SHARED USE PATH GENERAL ARRANGEMENT SHEET 2 OF 3	

Raised side road entry treatment for continuity of route

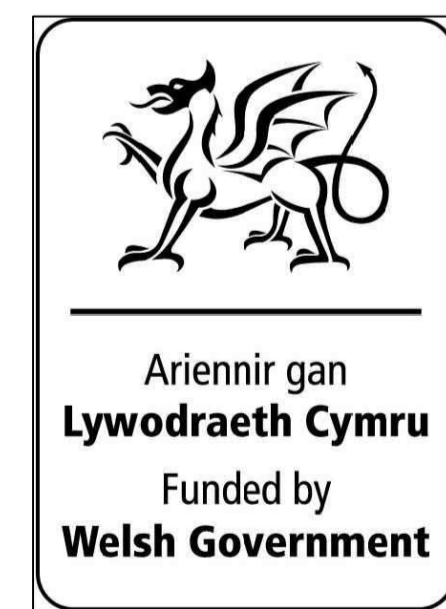
Gas Gov

Olchfa Bridge

Reduction of carriageway width to one lane for proposed SUP Toucan Crossing link to existing facilities on Gower Road

Raised side road entry treatment for continuity of route

Existing stone wall to be taken down and rebuilt using existing stone to achieve desired 3m footway width



FB Tank

Shelter SM

GOWER ROAD

FB

Shelter

ED

NOTES

- THIS IS A CAD DRAWING AND SHOULD NOT BE AMENDED BY HAND.
- All dimensions in millimeters unless otherwise stated.
- ©Hawffraint y Goron a hawflau cronfa ddata 2016 Yr Arolwg Ordnans 100023509.  
©Crown Copyright and database rights 2016 Ordnance Survey 100023509.
- Any errors or omissions to be reported to the Designer.

LEGEND

	Plane existing footway AC 6 Dense Surf.	(20mm) (20mm)		Proposed PCC kerbs, type K1 See detail B or SD_C101		Blister surface clay tactile pavours 200 x 133mm. Red in colour. Semi dry 6:1 sand / cement mortar bed. ST3 concrete. Type 1 sub base. Edged with E1 PCC kerbs. See detail A	(60mm) (30mm) (75mm) (50mm)
	Excavate existing AC 6 Dense Surf. AC 20 Dense Bin. Type 1, 2 or 4 sub base	(160mm) (20mm) (40mm) (100mm)		Proposed PCC kerbs, type K8 see detail B or SD_C101		Corduroy hazard clay tactile pavours 200x133mm blue in colour 800mm depth of tactile to be provided unless otherwise stated on drawings.Semi dry 6:1 sand/cement mortar bed.ST3 concrete on Type 1 sub base	
	AC Dense Surf. Regulating base course	(20-40mm) (100-345mm)		Proposed PCC kerbs, type K9 see detail B or SD_C101			
				Proposed PCC edging kerbs, type E1 see detail B or SD_C101			

<b>A1</b>		<b>RHAGARWEINIOL - PRELIMINARY</b>	
Dylunwyd Drawn	RPM	Tylli Title	
Archwiliwyd Checked	SLJ	ACTIVE TRAVEL 20 / 21 OLCHFA LINKS	
Cymerachwyd Approved	MST	PROPOSED SHARED USE PATH GENERAL ARRANGEMENT SHEET 3 OF 3	
Dyddiad Date	09 / 20	 <b>CYFARWYDDIAETH LLEOEDD</b> <b>DIRECTORATE OF PLACE</b> <small>STUART DAVIES B.Eng., C.Eng., M.I.C.E., MBA, PENNAETH PRIFYRD A CHLUDANT HEAD OF HIGHWAYS &amp; TRANSPORTATION</small>	
Graddfa Scale	1:200	Rhif y Dyluniad Drawing No	R530_OL_SUP_P03

Rev	Date	Details	Dr	Ch	Ap

I:\Capital\HfRoads\projects\R530\_Active Travel 2019\_2020\Local Schemes\Olchfa Link\Drawings\ACAD\R530\_OL\_SUP\_P01-P03 Members Plain.dwg



The Occupier

Please ask for:  
Gofynnwch am:

Robbie Meredith

Direct Line:  
Llinell Uniongyrchol:

01792 636229

E-Mail:  
E-Bost:

Our Ref:  
Ein Cyf:

Your Ref:  
Eich Cyf:

Date:  
Dyddiad:

21-10-20

Dear Resident

### **RE: Active Travel – Olchfa Links**

With reference to the above, Swansea Council Highway Improvements Group have secured Welsh Government funding for the design and construction of improved Active Travel facilities within the Olchfa / Clyne Woods area.

The proposed scheme will consist primarily of upgrading the existing bridleway along its length, and widening to 3m where necessary. Existing vegetation is to be cleared where required to achieve the desired width. A new Toucan crossing will also be installed on Gower Road to assist with connectivity of the Active Travel route.

In order to construct the works safely for both the general public and the Contractors' workforce, temporary traffic / pedestrian management will have to be installed during the works.

We will try to mitigate disruption to residents as much as possible and apologise for any inconvenience these works may cause.

Please contact myself or any member of the project team on the numbers below if further information is required.

Yours faithfully,

**Mark Thomas**

**Group Leader Traffic & Network Management**

### **DIRECTORATE OF PLACE – HIGHWAYS & TRANSPORTATION CYFARWYDDIATH LLEOEDD – PRIFFYRDD A CHLUDIANT**



(01792) 841625



[highways@swansea.gov.uk](mailto:highways@swansea.gov.uk)



[priffyrdd@abertawe.gov.uk](mailto:priffyrdd@abertawe.gov.uk)

Web: [www.swansea.gov.uk](http://www.swansea.gov.uk) Gwefan: [www.abertawe.gov.uk](http://www.abertawe.gov.uk)



We welcome correspondence in Welsh and will deal with Welsh and English correspondence to the same standards timescales.

To receive this information in alternative format, please contact the above.  
I dderbyn yr wybodaeth hon mewn fformat arall, cysylltwch â'r person uchod.



Y Deiliad

Gofynnwch am:  
Please ask for:

Robbie Meredith

Llinell Uniongyrchol:  
Direct Line:

01792 636229

E-Bost:  
E-Mail:

Ein Cyf:  
Our Ref:

Eich Cyf:  
Your Ref:

Dyddiad:  
Date:

21-10-20

Annwyl Breswlydd,

### **PARTHED: Teithio Llesol - Cysylltiadau Olchfa**

Ynglŷn â'r uchod, mae Grŵp Gwelliannau Priffyrdd Cyngor Abertawe wedi sicrhau cyllid gan Lywodraeth Cymru i ddylunio ac adeiladu gwell cyfleusterau teithio llesol yn ardal yr Olchaf/Coedwig Clun.

Bydd y cynllun arfaethedig yn ymwneud yn bennaf â gwella'r llwybr ceffylau presennol ar ei hyd, a'i led i 3m lle bo'r angen. Caiff y llystyfiant sydd yno'n barod ei glirio lle bo'r angen er mwyn cael y lled a ddymunir. Caiff croesfan Toucan newydd ei gosod ar Gower Road i helpu gyda chysylltedd y llwybr Teithio Llesol.

Er mwyn gwneud y gwaith hwn yn ddiogel, ar gyfer y cyhoedd a gweithlu'r contractwr, bydd yn rhaid rhoi dulliau rheoli traffig/cerddwyr ar waith dros dro yn ystod y gwaith.

Byddwn yn ceisio sicrhau cyn lleied o darfu â phosib i breswylwyr ac ymddiheurwn am unrhyw anghyfleustra a achosir gan y gwaith hwn.

Cysylltwch â mi neu unrhyw aelod o dîm y prosiect ar y rhif isod os oes angen rhagor o wybodaeth arnoch.

Yn gywir,

**Mark Thomas**

**Arweinydd Grŵp Rheoli'r Rhwydwaith Traffig a Phriffyrdd**

### **CYFARWYDDIAETH LLEOEDD - PRIFFYRDD A CHLUDIANT DIRECTORATE OF PLACE - HIGHWAYS & TRANSPORTATION**

 (01792) 841625  [priffyrdd@abertawe.gov.uk](mailto:priffyrdd@abertawe.gov.uk)  [highways@swansea.gov.uk](mailto:highways@swansea.gov.uk)

Gwefan: [www.abertawe.gov.uk](http://www.abertawe.gov.uk); Web: [www.swansea.gov.uk](http://www.swansea.gov.uk)



Croesewir gohebiaeth yn y Gymraeg a byddwn yn ymdrin â gohebiaeth Gymraeg a Saesneg i'r un safonau ac amserler l dderbyn yr wybodaeth hon mewn fformat arall, cysylltwch â'r person uchod.  
To receive this information in an alternative format, please contact the above.